



National Bureau of Statistics

STATISTICAL

BULLETIN

Catalogue Number: SIPI.2016/December

Released: 31st January 2017

SEYCHELLES INDUSTRIAL PRODUCTION INDEX (SIPI) December 2016

The Seychelles Industrial Production Index (SIPI) decreased by 26.3% in December 2016 compared to November 2016. On a year on year comparison, the index increased by 6.9% from December 2015.

CONTENTS

1. Introduction
2. Results and Highlights
3. Tables and Charts
4. Next Release
5. Contact Us

TABLES

- Table 1** Seychelles Industrial Production Index (SIPI) - Index numbers and percentage changes
- Table 2** Seychelles Industrial Production Index (SIPI) - by Manufacturing Sector

CHARTS

- Chart 1** Seychelles Industrial Production Index (SIPI) - Index numbers
- Chart 2** Seychelles Industrial Production Index (SIPI) - Month on month percentage changes

National Bureau of Statistics

CARAVELLE HOUSE - MANGLIER STREET, P.O. BOX 206 - VICTORIA - MAHE - SEYCHELLES, **Tel:** +248 4611650 - **Fax:** +248 4225634/4225339
E-mail: ceo@nbs.gov.sc, stats@nbs.gov.sc - **Website:** www.nbs.gov.sc

"Your stepping-stone for informed decisions"

1. INTRODUCTION

This bulletin presents a monthly measure of production from the perspective of the producer in the manufacturing and utilities industry.

Figures for January 2014 to December 2016 with 2013 as the reference period are presented in this bulletin.

Table 1 presents the monthly SIPI index numbers and percentage changes for the total SIPI. Table 2 presents the index number by manufacturing sector under the ISIC classification.

Charts 1 and 2 present index numbers and month on month percentage changes respectively. Chart 1 includes a seasonally adjusted series. Seasonal adjustment removes any seasonal effects from the original time series data.

2. RESULTS AND HIGHLIGHTS

The total Seychelles Industrial Production Index in December 2016 stood at 63.8 compared to 86.6 in November 2016. This represents a decrease of (26.3%). The largest fall over this period was recorded in the category of Processing and preparing of fish, crustaceans and molluscs (-42.5%).

The year on year movement from December 2015 to December 2016 represents an increase of (6.9%).

The quarter on quarter movement from quarter 3 2016 represents a decrease of (-14.7%).

3. TABLES AND CHARTS

Table 1: Seychelles Industrial Production Index

	Monthly index	Month on month % change	Year on year % change	Quarterly Index	Quarterly change
2014					
Jan	95.7	27.0%	-18.5%		
Feb	97.7	2.1%	-9.5%		
Mar	108.5	11.1%	-2.3%	100.6	10.7%
Apr	98.3	-9.4%	-5.2%		
May	96.2	-2.2%	-9.3%		
Jun	53.6	-44.3%	-29.9%	82.7	-17.8%
Jul	74.1	38.3%	-19.5%		
Aug	99.6	34.3%	-8.3%		
Sep	100.0	0.4%	-3.6%	91.2	10.3%
Oct	107.3	7.3%	1.4%		
Nov	82.4	-23.1%	-10.0%		
Dec	75.2	-8.8%	-0.3%	88.3	-3.2%
2015					
Jan	97.7	29.9%	2.1%		
Feb	101.2	3.6%	3.6%		
Mar	107.1	5.9%	-1.3%	102.0	15.5%
Apr	91.7	-14.4%	-6.7%		
May	89.2	-2.7%	-7.3%		
June	53.8	-39.6%	0.4%	78.2	-23.3%
July	103.9	93.1%	40.2%		
Aug	96.9	-6.8%	-2.7%		
Sep	84.9	-12.4%	-15.1%	95.2	21.7%
Oct	102.9	21.2%	-4.1%		
Nov	84.6	-17.8%	2.7%		
Dec	59.7	-29.4%	-20.6%	82.4	-13.4%
2016					
Jan	95.4	59.7%	-2.4%		
Feb	102.0	6.9%	0.8%		
Mar	101.8	-0.2%	-4.9%	99.8	21.1%
Apr	93.6	-8.1%	2.1%		
May	102.6	9.6%	15.0%		
Jun	99.0	-3.5%	84.0%	98.4	-1.4%
Jul	96.7	-2.4%	-6.9%		
Aug	103.2	6.7%	6.5%		
Sep	94.2	-8.7%	11.0%	98.0	-0.4%
Oct	100.3	6.4%	-2.5%		
Nov	86.6	-13.6%	2.4%		
Dec	63.8	-26.3%	6.9%	83.6	-14.7%

Source: National Bureau of Statistics

Notes:

- (1) Year on year % change is calculated as the percentage change from the same month of the previous year.
- (2) Quarterly index is calculated as the average of the monthly indexes for that quarter.
- (3) Reference base is 2013 = 100.

Table 2 - Seychelles Industrial Production Index by Manufacturing Sector

ISIC REV 4 FOURTH DIVISION CLASSIFICATION	Dec-15	Jan-16	Feb-16	Mar-16	Apr-16	May-16	Jun-16	Jul-16	Aug-16	Sep-16	Oct-16	Nov-16	Dec-16
MANUFACTURING OF ARTICLES OF CONCRETE, CEMENT AND PLASTER	110.3	133.3	131.1	141.0	132.3	138.9	145.9	158.9	182.6	159.4	174.5	158.0	143.1
MANUFACTURE OF TOBACCO PRODUCTS	73.6	73.6	131.6	106.7	91.6	111.0	86.1	107.4	56.4	72.0	55.2	82.7	129.9
PROCESSING AND PRESERVING OF FISH, CRUSTACEANS AND MOLLUSCS	39.4	91.7	98.2	97.6	89.9	98.6	91.6	92.0	97.6	87.0	94.0	75.8	43.6
DISTILLING, RECTIFYING AND BLENDING OF SPIRITS	147.2	86.7	56.0	86.0	64.7	52.1	60.4	37.2	93.3	80.9	84.7	74.8	94.7
MANUFACTURE MALT LIQUORS AND MALT	112.6	69.9	97.4	68.1	40.9	84.8	152.3	101.0	110.2	110.3	82.4	112.2	109.0
MANUFACTURE OF SOFT DRINK; PRODUCTION OF MINERAL WATER AND OTHER BOTTLED WATER	119.9	79.7	87.4	62.3	98.8	98.0	70.6	82.6	78.7	62.9	107.9	86.0	114.2
MANUFACTURING OF OTHER FOOD PRODUCTS N.E.C	87.2	51.3	76.3	78.4	26.9	76.8	88.6	81.0	98.5	90.8	98.2	56.6	75.1
MANUFACTURE OF OTHER ARTICLES OF PAPER AND PAPERBOARD	88.0	120.6	132.1	143.6	121.2	123.6	144.6	121.7	159.9	127.6	117.2	118.6	128.0
MANUFACTURE OF PAINTS, VARNISHES AND SIMILAR COATINGS, PRINTING INK AND MASTICS	53.3	20.0	140.7	100.3	188.9	49.0	131.6	29.0	63.4	67.5	55.2	113.7	85.7
MANUFACTURE OF OTHER CHEMICAL PRODUCTS	100.0	100.0	100.0	100.0	100.0	100.0	100.0	100.0	100.0	100.0	100.0	100.0	100.0
MANUFACTURE OF DAIRY PRODUCTS	100.0	100.0	100.0	100.0	100.0	100.0	100.0	100.0	100.0	100.0	100.0	100.0	100.0
ELECTRIC POWER GENERATION, TRANSMISSION AND DISTRIBUTION	108.4	113.8	112.6	134.5	124.3	118.5	104.7	105.1	111.7	111.3	126.0	115.5	115.8
WATER COLLECTION, TREATMENT AND SUPPLY	209.0	210.1	205.2	204.9	201.8	216.8	210.1	203.1	213.0	216.6	197.8	209.9	214.6
TOTAL	59.7	95.4	102.0	101.8	93.6	102.6	99.0	96.7	103.2	94.2	100.3	86.6	63.8

Source: National Bureau of Statistics

Notes:

Table 2: Index reference period 2013 = 100

Chart 1
Industrial Production Index

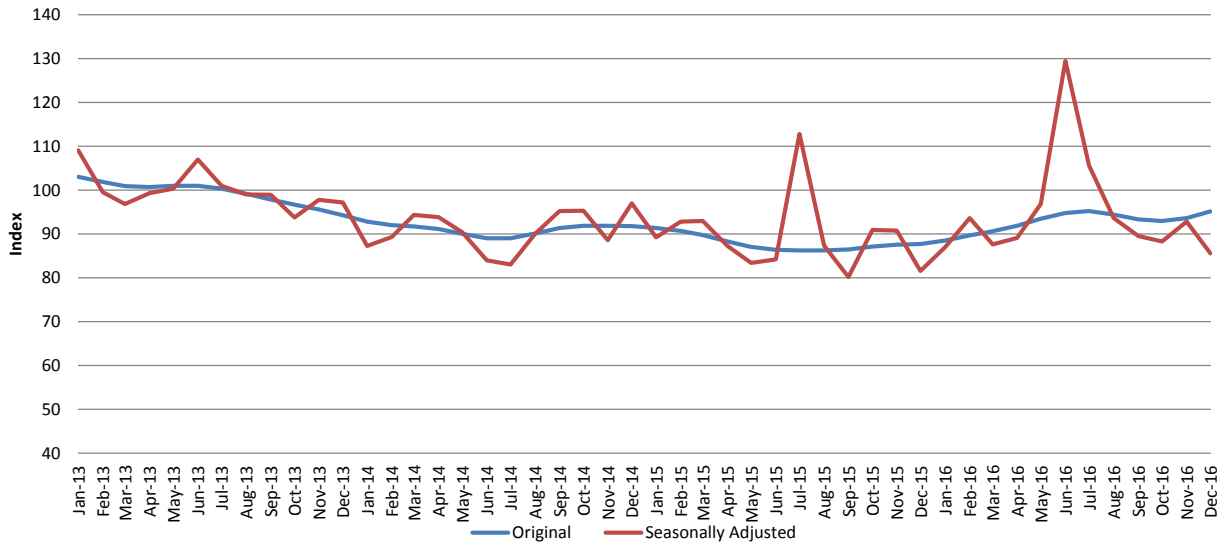
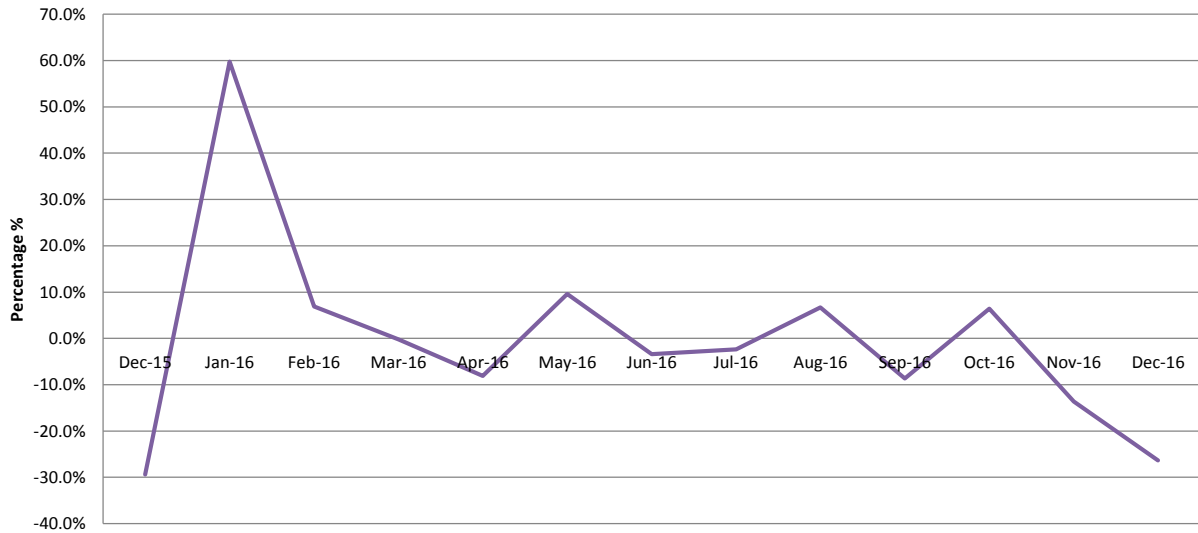


Chart 2
SIPI - Month on Month Percentage Change



4. NEXT RELEASE

The next issue of the SIPI will be released on Tuesday 28th February 2017 and will contain data for January 2017.

5. CONTACT US

For more information regarding this publication please contact Ms Rebeka Labiche or Ms Carol David on Tel: + (248) 4 611 658 or + (248) 4611602 | Fax: + (248) 4 225 634 or email: rebeka@nbs.gov.sc or carol@nbs.gov.sc

To access any of our statistics please visit our website: www.nbs.gov.sc