



National Bureau of Statistics

STATISTICAL

BULLETIN

Catalogue Number: PPI.M.2016/May

Released: 30th June 2016

PRODUCER PRICE INDEX MANUFACTURING (PPIM) May 2016

The Seychelles Producer Price Index for Manufacturing (PPIM) increased by 0.2% in May 2016 compared to April 2016. On a year on year comparison, the index decreased by 7.2% from May 2015.

CONTENTS

1. Introduction
2. Results and Highlights
3. Tables and Charts
4. Next Release
5. Contact Us

TABLES

- Table 1** Producer Price Index for Manufacturing - Index numbers and percentage changes
- Table 2** Producer Price Index for Manufacturing Sector

CHARTS

- Chart 1** Producer Price Index for Manufacturing - Index numbers
- Chart 2** Producer Price Index for Manufacturing - Month on month percentage changes

National Bureau of Statistics

CARAVELLE HOUSE - MANGLIER STREET, P.O. BOX 206 - VICTORIA - MAHE - SEYCHELLES, Tel: +248 4611650 - Fax: +248 4225634/4225339
E-mail: ceo@nbs.gov.sc, stats@nbs.gov.sc - Website: www.nbs.gov.sc

"Your stepping-stone for informed decisions"

1. INTRODUCTION

The Producer Price Index for Manufacturing (PPIM) is compiled by the National Bureau of Statistics. It presents a monthly measure of inflation from the perspective of the producer in the manufacturing and utilities industry.

Figures for January 2014 to May 2016, with January 2013 as the reference period are presented in this bulletin. Table 1 presents the monthly PPIM index numbers and percentage changes for the total PPIM.

Charts 1 and 2 present index numbers and month on month percentage change respectively. Chart 1 now includes a seasonally adjusted series. Seasonal adjustment removes any seasonal effects from the original time series data.

2. RESULTS AND HIGHLIGHTS

The total PPIM Index in May 2016 stood at 77.3 compared to 77.2 in April 2016. This represents an increase of 0.2%.

Most sub categories remained unchanged over the month. However, an increase occurred in the manufacturing of articles of concrete, cement and plaster (0.8%).

The year on year movement from May 2015 to May 2016 represents a decrease of 7.2%. The largest fall over this period occurred in the category manufacture Malt liquors and Malt (-37.3%).

3. TABLES AND CHARTS

	Monthly index	Month on month % change	Year on year % change	Quarterly Index	Quarterly change
2014					
Jan	103.5	3.0%	-2.6%		
Feb	103.6	0.1%	4.2%		
Mar	104.5	0.8%	6.7%	103.9	2.7%
Apr	106.7	2.1%	9.4%		
May	105.3	-1.2%	6.3%		
Jun	106.3	0.9%	6.9%	106.1	2.1%
Jul	104.9	-1.3%	7.1%		
Aug	107.0	2.0%	10.0%		
Sep	107.0	0.0%	5.4%	106.3	0.2%
Oct	110.1	2.9%	7.3%		
Nov	112.0	1.7%	11.3%		
Dec	108.4	-3.2%	7.9%	110.2	3.7%
2015					
Jan	93.7	-13.6%	-9.5%		
Feb	93.2	-0.5%	-10.0%		
Mar	88.6	-4.9%	-15.2%	91.9	-16.6%
Apr	84.4	-4.7%	-20.9%		
May	83.3	-1.4%	-20.9%		
June	83.6	0.4%	-21.4%	83.8	-8.8%
Jul	79.3	-5.2%	-24.4%		
Aug	80.5	1.5%	-24.8%		
Sep	82.3	2.3%	-23.1%	80.7	-3.7%
Oct	80.1	-2.6%	-27.2%		
Nov	77.7	-3.0%	-30.6%		
Dec	80.0	3.0%	-26.2%	79.3	-1.7%
2016					
Jan	74.6	-6.8%	-20.4%		
Feb	76.1	2.0%	-18.3%		
Mar	76.0	-0.1%	-14.2%	75.6	-4.7%
Apr	77.2	1.6%	-8.5%		
May	77.3	0.2%	-7.2%		

Source: National Bureau of Statistics

Notes:

(1) Year on year % change is calculated as the percentage change from the same month of the previous year

(2) Quarterly index is calculated as the average of the monthly indexes for that quarter

(3) Reference base is 2013 = 100

Table 2: Producer Price Index by Manufacturing Sector

ISIC REV 4 FOURTH DIVISION CLASSIFICATION	May-15	Jun-15	Jul-15	Aug-15	Sep-15	Oct-15	Nov-15	Dec-15	Jan-16	Feb-16	Mar-16	Apr-16	May-16
MANUFACTURING OF ARTICLES OF CONCRETE, CEMENT AND PLASTER	101.6	101.0	101.0	100.8	100.8	100.7	104.0	104.3	104.3	104.0	103.7	102.8	103.6
MANUFACTURE OF TOBACCO PRODUCTS	100.0	100.0	100.0	100.0	100.0	100.0	100.0	100.0	100.0	100.0	100.0	100.0	100.0
PROCESSING AND PRESERVING OF FISH, CRUSTACEANS AND MOLLUSCS	82.4	84.2	77.8	80.9	83.2	81.4	78.1	81.3	75.7	77.8	77.7	79.2	79.4
DISTILLING, RECTIFYING AND BLENDING OF SPIRITS	112.2	112.6	112.0	103.1	102.9	103.2	103.2	103.0	103.1	103.0	102.8	103.8	103.4
MANUFACTURE MALT LIQUORS AND MALT	100.6	83.8	82.6	64.1	64.2	63.9	64.1	63.0	63.6	63.5	62.6	63.2	63.1
MANUFACTURE OF SOFT DRINK; PRODUCTION OF MINERAL WATER AND OTHER BOTTLED WATER	95.2	91.1	91.9	92.7	93.9	93.9	93.7	93.8	93.7	93.7	93.9	93.9	93.9
MANUFACTURING OF OTHER FOOD PRODUCTS N.E.C	99.8	99.8	99.8	99.8	99.8	99.8	99.8	99.8	99.8	99.8	99.8	99.8	99.8
MANUFACTURE OF OTHER ARTICLES OF PAPER AND PAPERBOARD	98.4	98.4	98.4	98.4	98.4	98.4	98.4	98.4	98.4	98.4	98.4	98.4	98.4
MANUFACTURE OF PAINTS, VARNISHES AND SIMILAR COATINGS, PRINTING INK AND MASTICS	101.0	104.5	104.5	104.5	104.5	99.8	99.8	99.8	99.8	99.8	98.9	98.9	99.1
MANUFACTURE OF OTHER CHEMICAL PRODUCTS	100.0	100.0	100.0	100.0	100.0	100.0	100.0	100.0	100.0	100.0	100.0	100.0	100.0
MANUFACTURE OF DAIRY PRODUCTS	100.0	100.0	100.0	100.0	100.0	100.0	100.0	100.0	100.0	100.0	100.0	100.0	100.0
ELECTRIC POWER GENERATION, TRANSMISSION AND DISTRIBUTION	58.8	58.8	64.1	64.1	64.1	55.5	55.5	55.5	41.6	41.6	41.6	41.6	41.6
WATER COLLECTION, TREATMENT AND SUPPLY	107.9	107.9	107.9	107.9	107.9	107.9	107.9	107.9	107.9	107.9	107.9	107.9	107.9
TOTAL	83.3	83.6	79.3	80.5	82.3	80.1	77.7	80.0	74.6	76.1	76.0	77.2	77.3

Source: National Bureau of Statistics

Notes:

*Index reference period 2013 = 100

Chart 1
Producer Price Index

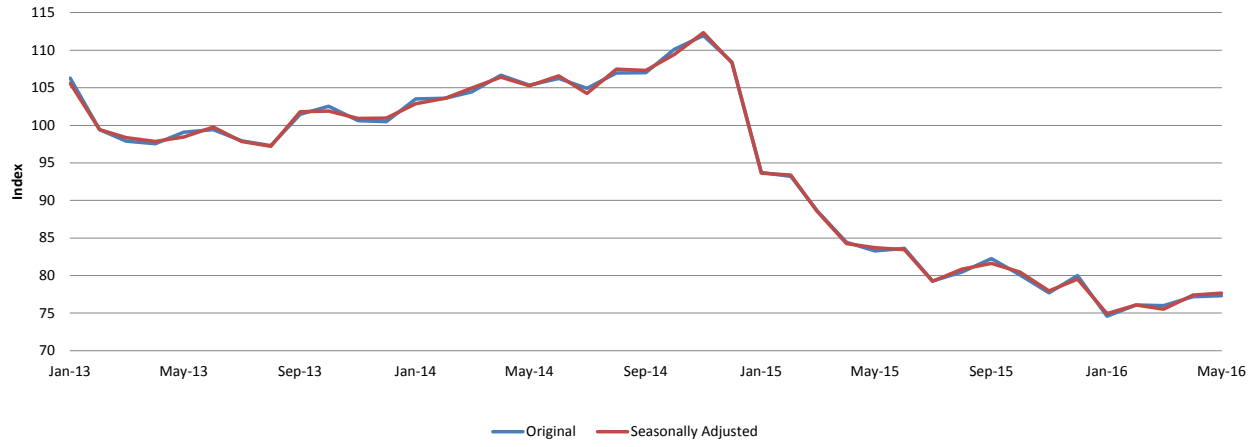
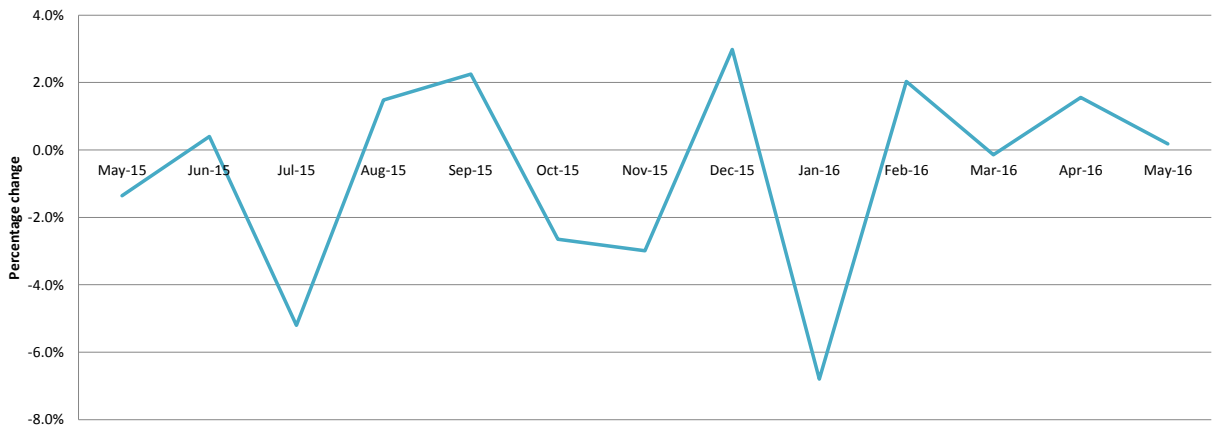


Chart 2
PPI- Month on Month Percentage Change



4. NEXT RELEASE

The next issue of the PPI will be released on Friday 29 July 2016 and will contain data for June 2016.

5. CONTACT US

For more information regarding this bulletin, the concepts, sources or methodology to compile producer price indexes, please contact Mrs Jeanne D'arc Camille on Tel: + (248) 4 611 659 | Fax: + (248) 4 225 634 or email: jeannedarc@nbs.gov.sc

To access any of our statistics please visit our website: www.nbs.gov.sc

4. NEXT RELEASE

The next issue of the PPI will be released on Friday 29th July 2016 and will contain data for June 2016.

5. CONTACT US

For more information regarding this bulletin, the concepts, sources or methodology to compile producer price indexes, please contact Mrs Jeanne D'arc Camille on Tel: + (248) 4 611 659 | Fax: + (248) 4 225 634 or email: jeannedarc@nbs.gov.sc

To access any of our statistics please visit our website: www.nbs.gov.sc
