



National Bureau of Statistics

STATISTICAL

BULLETIN

Catalogue Number: Population 2015/2

Released 18th August 2015

POPULATION AND VITAL STATISTICS

MID YEAR POPULATION ESTIMATES 2015

The population of Seychelles stood at 93,419 at 30th June 2015, indicating a growth rate of 2.2% over 2014. In mid-2015 there were 46,322 males and 47,097 females or an approximate ratio of 984 men for every 1000 women. There were 810 registered live births and 357 registered deaths for the first six months of 2015.

CONTENTS

SUMMARY

1. Population Change
2. Births
3. Deaths
4. Migration
5. Concepts, Sources and Methods
6. Demographic Definitions
7. Next release
8. Contact us

TABLES

1. Mid-Year Population estimates, births and deaths 1971-2015
- 2a. Components of Population change, 2002-2015
- 2b. Population growth, 1979-2015
3. Mid 2015 Population Estimates
4. Mid-year Population Estimates 2011-2015
5. Age-Dependency ratio, 1990-2015
6. Registered Live Births by year, month of registration, sex and status, 2011-2015
7. Registered Live Births by birth order, status and age group of mother, 2015
8. Registered Live Births by district of residence and age group of mother, 2015
9. Population by District, 2011-2015

CHARTS

1. Population Growth, 1979-2015
2. Population Pyramid: Mid 2015 Population Estimates

National Bureau of Statistics

CARAVELLE HOUSE - MANGLIER STREET, P.O. BOX 206 - VICTORIA - MAHE - SEYCHELLES, Tel: +248 4611650 - Fax: +248 4225634/4225339
E-mail: ceo@nbs.gov.sc, stats@nbs.gov.sc - Website: www.nbs.gov.sc

"Your stepping-stone for informed decisions"

MID YEAR POPULATION 2015

1. POPULATION CHANGE

The population of Seychelles is estimated at 93,419 persons as at 30th June 2015. This represents an increase of 2,060 persons or an annual growth rate of 2.2% since 1st July 2014. Table 1 shows the mid-year population estimates, vital events and rates for the period 1971-2015.

Table 2a shows the components of population change for the period 2002-2015. During the period July 2014 to June 2015 an actual growth rate of 2.2% was recorded while the rate of natural increase (births less deaths) was 2.3%. On a longer time scale, the population increased from 74,205 in 1994 to 93,419 in 2015 with an annual growth rate of 1.1% per annum. If migration is discounted, the rate of natural increase for that same period is 1.5% per annum which is the rate at which the Seychelles population would double in 46 years.

Table 3 presents the mid 2015 population in single years. In 2015 there were 46,322 males and 47,097 females or an approximate ratio of 984 men for every 1000 women. The population pyramid (Chart 2) presents a graphic display of the mid-2015 population.

Table 4 shows the mid-year population estimates by broad age groups for the years 2011-2015. The proportion of persons of prime working age (20-44) has decreased from 39.5% in 2011 to 38.9% in 2015. Conversely, the proportion aged 45-64 has increased from 22% in 2011 to 25.3% during that same period.

Table 5 indicates that the age dependency ratio has continuously declined from 689 in 1990 to 427 in 2015. The age-dependency ratio measures the number of persons in the dependent age (under 15 and 65 years and above) to those in the economically productive age (15-64).

2. BIRTHS

Table 6 shows the status of births in Seychelles since 2011. Of the 1,590 births between 1st July 2014 and 30th June 2015, 780 occurred in the second half of 2014 and 810 occurred in the first half of 2015.

The proportion of legitimate births has increased from 21.8% in 2011 to 23.7% for the first six months of 2015. The proportion of acknowledged births (where the baby has been recognised by the father) has also increased from 61% in 2011 to 61.7% in the first six months of 2015, whilst the proportion of non-acknowledged births has decreased from 17.1% in 2011 to 14.6 % for the same period of 2015.

Table 7 shows that 87 or (10.7%) of all births in the first six months of 2015 occurred to women aged less than 20 years. This has decreased from 12% recorded for the same period of 2014.

Table 8 shows that the districts with the highest number of births for the first six months of 2015 were English River (84)*, Anse Royale (45), Anse Etoile and Mont Buxton both with (41) and Anse Boileau (39). *It is worth noting that since Perseverance is not an Electoral district births to mothers residing there are recorded in the English River district.

Of the total number of births in each district, Grand Anse Praslin recorded the highest percentage of births to teenagers (19%), followed by Port Glaud and Baie Lazare with (18%) each.

3. DEATHS

There were 720 deaths registered in the period July 2014 to June 2015. Of these deaths, 363 occurred during the last six months of 2014 whilst 357 occurred in the first six months of 2015. (The number of deaths in Table 2 excludes deaths occurring to persons not on the National Population Database (NPD). Those persons are excluded from the calculation of the population estimates).

The total number of infant deaths (death to babies aged less than one year) for the same period was 16. Of these, 6 occurred in the last six months of 2014 and 10 in the first half of 2015.

4. MIGRATION

The net migration figure of (1,162) persons for the period July 2014 to June 2015 (Table 2a) was made up of 600 male and 562 female in-migrants

5. CONCEPTS, SOURCES, METHODS AND DEFINITIONS

The population estimates refer to the number of persons in the population at 30th June each year, and the statistics are referred to as the mid-year estimates. These statistics are produced at the country level, broken down by single year of age and by sex. These estimates refer to the usual resident population which is based on the UN guidelines and are benchmarked to the results of the 2010 Population and Housing Census.

Estimates at district level are also available. However, these are not disaggregated by age and sex.

Each year population estimates are updated using a standard technique known as the “cohort component method”. The previous year’s population estimate is “aged on” by one year, with births added, deaths subtracted and adjusted for net migration. The base year, births, deaths and migration refers to the period Jul-Dec 2013 and Jan-June 2014. Explanatory notes are given below for each of the Population components.

BIRTHS

Birth figures are obtained from the Civil Status offices for all registered births. Births to non-Seychellois mothers are included.

DEATHS

Death figures are obtained from the Civil Status office for all registered deaths. Deaths to non-residents and deaths to babies who have not been registered as a birth are excluded in the mid-year estimates calculation.

MIGRATION

Migration is the geographic movement of people across a specified boundary for the purpose of establishing a new permanent or semi-permanent residence. The terms “immigration” and

“emigration” are used to refer to moves between countries (international migration).

Data on Migration is collected from embarkation and disembarkation cards at the Immigration Division. Net Migration is immigrants less emigrants.

6. DEMOGRAPHIC DEFINITIONS

Birth rate: The birth rate (also called the crude birth rate) indicates the number of live births per 1,000 population in a given year.

Death rate: The death rate (also called the crude death rate) indicates the number of deaths per 1,000 population in a given year.

Infant Mortality rate: The number of deaths of infants under age 1 per 1,000 live births.

Growth rate: The growth rate is the rate at which a population is increasing (or decreasing) in a given year due to

(a) *natural increase* and (b) *net migration*

It is expressed as a percentage of the base population, and takes into account all components of population growth: **Births, Deaths, and Migration.**

Doubling time: Growth expressed as a percentage is not very descriptive for many purposes. Is a 3 percent growth rate fast or slow? A more vivid way of showing population growth is to calculate how long, at its current growth rate, a population would take to double in size.

Age Dependency ratio: It is the ratio of people in the “dependent” ages (those under age 15 and ages 65 and older) to those in the “economically productive” ages (15 to 64 years) in a population. The age-dependency ratio is often used as an indicator of the economic burden the productive portion of a population must carry—even though some people defined as “dependent” are producers and some people in the “productive” ages are economically dependent.

7. NEXT RELEASE

The next release of the population bulletin will be in March 2016.

8. CONTACT US

For more information regarding this publication please contact Mrs Therese Gopal on Tel: (248) 4 611 666 or email therese@nbs.gov.sc

MID-YEAR POPULATION ESTIMATES, BIRTHS AND DEATHS, 1971-2015

Table 1

Year	Mid-year Population	No. of		No. of		Registered	
		Registered Live Births	Birth ⁽¹⁾ Rate	Registered Deaths	Death ⁽¹⁾ Rate	Infant Deaths	Infant ⁽²⁾ Mortality
1971	54,695	1837	33.6	463	8.5	61	33.2
1972	56,029	1,723	30.8	529	9.4	62	36.0
1973	56,892	1,639	28.8	474	8.3	51	31.1
1974	57,937	1,860	32.1	496	8.6	73	39.2
1975	59,292	1,806	30.5	433	7.3	64	35.4
1976	60,504	1,642	27.1	466	7.7	53	32.3
1977	61,786	1,599	25.9	477	7.7	69	43.2
1978	62,150	1,796	28.9	466	7.5	47	26.2
1979	62,686	1,730	27.6	436	7.0	44	25.4
1980	63,261	1,830	28.9	444	7.0	32	17.5
1981	64,035	1,802	28.1	442	6.9	31	17.2
1982	64,413	1,552	24.1	482	7.5	30	19.3
1983	64,335	1,662	25.8	452	7.0	24	14.4
1984	64,717	1,739	26.9	487	7.5	24	13.8
1985	65,244	1,729	26.5	468	7.2	31	17.9
1986	65,652	1,722	26.2	498	7.6	31	18.0
1987 ⁽³⁾	68,499	1,684	24.5	505	7.4	31	18.4
1988	68,755	1,643	23.8	504	7.3	28	17.0
1989	69,167	1,600	23.0	566	8.1	29	18.1
1990	69,507	1,617	23.1	543	7.7	21	13.0
1991 ⁽⁴⁾	70,439	1,706	24.2	542	7.7	22	12.9
1992 ⁽⁵⁾	70,763	1,601	22.6	522	7.4	19	11.9
1993	72,253	1,689	23.4	597	8.3	22	13.0
1994 ⁽⁶⁾	74,205	1,700	22.9	562	7.6	15	8.8
1995	75,304	1,582	21.0	525	7.0	29	18.3
1996	76,417	1,611	21.1	566	7.4	15	9.3
1997	77,319	1,475	19.1	603	7.8	12	8.1
1998 ⁽⁷⁾	78,846	1,412	17.9	570	7.2	12	8.5
1999	80,410	1,460	18.2	560	7.0	15	10.3
2000 ⁽⁷⁾	81,131	1,512	18.6	553	6.8	15	9.9
2001	81,202	1,440	17.7	554	6.8	19	13.2
2002 ⁽⁸⁾	83,723	1,481	17.7	647	7.7	26	17.6
2003 ⁽⁸⁾	82,781	1,498	18.1	668	8.1	25	16.7
2004 ⁽⁹⁾	82,475	1,435	17.4	611	7.2	17	11.8
2005	82,858	1,536	18.5	673	8.1	16	10.4
2006	84,600	1,467	17.3	664	7.8	14	9.5
2007	85,033	1,499	17.6	630	7.4	16	10.7
2008	86,956	1,546	17.8	662	7.6	20	12.9
2009	87,298	1,580	18.1	684	7.8	17	10.8
2010 ⁽¹⁰⁾	89,770	1,504	16.8	664	7.4	21	14.0
2011 ⁽¹¹⁾	87,441	1,625	18.6	691	7.9	16	9.8
2012	88,303	1,645	18.6	651	7.4	17	10.3
2013	89,949	1,566	17.4	717	8.0	29	18.5
2014	91,359	1,557	17.0	725	7.9	17	10.9
2015	93,419						

Source: National Bureau of Statistics/Civil Status Office

- Notes:**
- ⁽¹⁾ Measured per thousand of mid-year population
 - ⁽²⁾ Deaths of infants under one year of age per 1000 live births
 - ⁽³⁾ The mid year population estimates for 1987-1993 have been rebased using the 1987 census data
 - ⁽⁴⁾ 2 persons aged 36 & 37 who were registered in 1991 are not included in births in this table
 - ⁽⁵⁾ 2 persons aged 27 & 50 who were registered in 1992 are not included in births in this table
 - ⁽⁶⁾ The population has been rebased using the 1994 Census results
 - ⁽⁷⁾ The population has been adjusted due to misreporting of births from Civil Status
 - ⁽⁸⁾ The original census figure has been adjusted by 2.4% to take into account undercounts
 - ⁽⁹⁾ The population has been rebased using the 2002 Census results.
 - ⁽¹⁰⁾ The population has been rebased using the 2010 Census results.
 - ⁽¹¹⁾ The population has been adjusted due to misreporting of births from Civil Status

COMPONENTS OF POPULATION CHANGE, 2002 - 2015

Table 2a

Period	Population at beginning of period	Registered Live Births	Registered Deaths	Migration	Population at end of period
Jul-Dec 2002 ⁽¹⁾	83,723	724	-287	-1984	82,176
Jan-June 2003	82,176	771	-323	157	82,781
Jul-Dec 2003	82,781	727	-331	-1186	81,991
Jan-June 2004	81,991	748	-276	12	82,475
Jul-Dec 2004	82,475	687	-319	-396	82,447
Jan-June 2005	82,447	808	-297	-106	82,852
Jul-Dec 2005	82,852	728	-358	-505	82,717
Jan-June 2006	82,717	732	-363	1514	84,600
Jul-Dec 2006	84,600	735	-289	-1104	83,942
Jan-June 2007	83,942	767	-315	639	85,033
Jul-Dec 2007	85,033	732	-290	-168	85,307
Jan-June 2008	85,307	719	-340	1270	86,956
Jul-Dec 2008	86,956	827	-296	-348	87,139
Jan-June 2009	87,139	834	-298	-377	87,298
Jul-Dec 2009	87,298	746	-358	-564	87,122
Jan-June 2010	87,122	740	-316	-1021	86,525
Jul-Dec 2010 ⁽²⁾	89,770	764	-331	-2113	88,090
Jan-June 2011	88,090	775	-324	-1100	87,441
Jul-Dec 2011	87,441	850	-328	310	88,273
Jan-June 2012	88,273	838	-322	-486	88,303
Jul-Dec 2012 ⁽³⁾	88,303	807	-306	1115	89,919
Jan-June 2013	89,919	808	-336	-442	89,949
Jul-Dec 2013	89,949	758	-344	619	90,982
Jan-June 2014	90,982	777	-342	-58	91,359
Jul-Dec 2014	91,359	780	-346	333	92,126
Jan-June 2015	92,126	810	-346	829	93,419

Source: National Bureau of Statistics from information provided by Department of Immigration and Civil Status

Notes:

⁽¹⁾ The population has been rebased using the 2002 Census results

⁽²⁾ The population has been adjusted and rebased using the 2010 Census results

⁽³⁾ As from July seaman entering the country to join fishing vessels and exiting the country thereafter are excluded from the migration figures

The table below shows infant deaths that are excluded from population estimates as they were not registered as a birth by Civil Status office

Year	Infant Deaths
2009	1
2011	1
2013	5
2014	5

POPULATION GROWTH 1979-2015

Table 2b

Period (mid-year)	Mid Year Population	Growth rate with	
		Natural Increase	Migration
1979	62,686	2.1	0.9
1980	63,261	2.2	0.9
1981	64,035	2.0	1.2
1982	64,413	1.9	0.6
1983	64,335	1.6	-0.1
1984	64,717	1.8	0.6
1985	65,244	1.8	0.8
1986	65,652	1.7	0.6
1987 ⁽¹⁾	68,499	1.8	4.2
1988	68,755	1.7	0.4
1989	69,167	1.6	0.6
1990	69,507	1.4	0.5
1991	70,438	1.7	1.3
1992	70,763	1.4	0.5
1993	72,253	1.4	2.1
1994 ⁽²⁾	74,205	1.6	2.7
1995	75,304	1.4	1.5
1996	76,417	1.4	1.5
1997	77,319	1.3	1.2
1998	78,846	1.1	2.0
1999	80,410	1.1	2.0
2000	81,131	1.2	0.9
2001	81,202	1.2	0.1
2002 ⁽³⁾	83,723	2.4	3.1
2003 ⁽⁴⁾	82,781	1.1	-1.1
2004	82,475	1.0	-0.4
2005	82,852	1.1	0.5
2006	84,600	0.9	2.1
2007	85,033	1.1	0.5
2008	86,956	1.0	2.2
2009	87,298	1.2	0.4
2010 ⁽⁵⁾	89,770	0.9	2.8
2011	87,441	2.4	-2.7
2012	88,303	2.5	1.0
2013	89,949	2.3	1.8
2014	91,359	2.3	1.6
2015	93,419	2.3	2.2

Source: National Bureau of Statistics

Notes:

⁽¹⁾ From 1987-1993 the population estimates have been rebased using the 1987 Census results

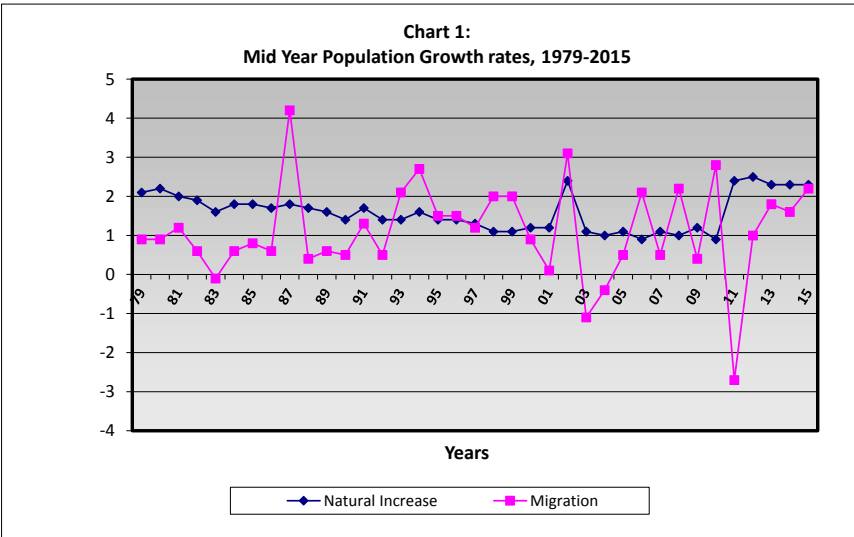
⁽²⁾ From 1994-2001 the population has been rebased using the 1994 Census results.

⁽³⁾ The 2002 census figure has been adjusted by 2.4% to take into account undercounts

⁽⁴⁾ From 2003-2009 the estimates have been rebased on the 2002 Census figure

⁽⁵⁾ From 2010 onwards the estimates have been adjusted and rebased on the 2010 Census figure

⁽⁶⁾ Natural Increase is Population plus Total Births less Total Deaths



MID 2015 POPULATION ESTIMATES

Table 3

Age	Males	Females	Total	Age	Males	Females	Total	Age	Males	Females	Total
0	832	769	1,601	35	828	914	1,742	70	245	267	512
1	765	733	1,498	36	677	704	1,381	71	171	184	355
2	792	777	1,569	37	699	708	1,407	72	193	159	352
3	844	800	1,644	38	613	767	1,380	73	202	216	418
4	779	820	1,599	39	725	690	1,415	74	114	202	316
0-4	4,012	3,899	7,911	35-39	3,542	3,783	7,325	70-74	925	1,028	1,953
5	645	524	1,169	40	687	757	1,444	75	137	206	343
6	656	663	1,319	41	769	656	1,425	76	125	161	286
7	566	653	1,219	42	743	653	1,396	77	100	201	301
8	647	690	1,337	43	934	835	1,769	78	84	177	261
9	614	535	1,149	44	745	757	1,502	79	82	135	217
5-9	3,128	3,065	6,193	40-44	3,878	3,658	7,536	75-79	528	880	1,408
10	653	636	1,289	45	875	666	1,541	80	78	141	219
11	528	641	1,169	46	573	688	1,261	81	60	163	223
12	621	563	1,184	47	645	829	1,474	82	78	140	218
13	646	612	1,258	48	491	717	1,208	83	27	131	158
14	551	648	1,199	49	542	696	1,238	84	51	107	158
10-14	2,999	3,100	6,099	45-49	3,126	3,596	6,722	80-84	294	682	976
15	543	583	1,126	50	679	623	1,302	85	40	104	144
16	605	500	1,105	51	752	815	1,567	86	18	95	113
17	490	536	1,026	52	567	696	1,263	87	25	68	93
18	613	518	1,131	53	712	847	1,559	88	29	64	93
19	572	537	1,109	54	889	805	1,694	89	14	48	62
15-19	2,823	2,674	5,497	50-54	3,599	3,786	7,385	85-89	126	379	505
20	597	477	1,074	55	721	679	1,400	90+	45	193	238
21	632	724	1,356	56	540	417	957				
22	734	604	1,338	57	513	456	969				
23	789	632	1,421	58	500	589	1,089				
24	668	652	1,320	59	540	502	1,042				
20-24	3,420	3,089	6,509	55-59	2,814	2,643	5,457				
25	487	491	978	60	563	419	982				
26	598	522	1,120	61	520	476	996				
27	792	725	1,517	62	289	399	688				
28	911	638	1,549	63	357	380	737				
29	856	730	1,586	64	290	369	659				
25-29	3,644	3,106	6,750	60-64	2,019	2,043	4,062				
30	796	862	1,658	65	341	335	676				
31	640	743	1,383	66	322	284	606				
32	860	560	1,420	67	262	279	541				
33	989	1,007	1,996	68	228	242	470	TOTAL	46,322	47,097	93,419
34	774	957	1,731	69	188	224	412				
30-34	4,059	4,129	8,188	65-69	1,341	1,364	2,705				

Source: National Bureau of Statistics

MID-YEAR POPULATION ESTIMATES 2011-2015

Table 4

Sex and Age Group	2011⁽¹⁾	2012	2013	2014	2015
<u>MALES</u>	<u>43,127</u>	<u>43,313</u>	<u>44,735</u>	<u>45,278</u>	<u>46,322</u>
0-19	13,624	13,594	13,498	12,989	12,962
20-44	17,151	16,957	17,938	18,528	18,543
45-64	9,677	9,985	10,465	10,780	11,558
65+	2,675	2,777	2,834	2,981	3,259
<u>FEMALES</u>	<u>44,314</u>	<u>44,990</u>	<u>45,214</u>	<u>46,081</u>	<u>47,097</u>
0-19	13,188	13,185	12,985	12,623	12,738
20-44	17,360	17,378	17,227	17,607	17,765
45-64	9,582	10,215	10,736	11,459	12,068
65+	4,184	4,212	4,266	4,392	4,526
<u>BOTH SEXES</u>	<u>87,441</u>	<u>88,303</u>	<u>89,949</u>	<u>91,359</u>	<u>93,419</u>
0-19	26,812	26,779	26,483	25,612	25,700
20-44	34,511	34,335	35,165	36,135	36,308
45-64	19,259	20,200	21,201	22,239	23,626
65+	6,859	6,989	7,100	7,373	7,785
<u>BOTH SEXES</u>					
%					
0-19	30.7	30.3	29.4	28.5	27.5
20-44	39.5	38.9	39.1	40.2	38.9
45-64	22.0	22.9	23.6	24.7	25.3
65+	7.8	7.9	7.9	8.2	8.3

Source: National Bureau of Statistics

Notes: (1) From 2011 onwards the population is based on the 2010 Census

AGE DEPENDENCY RATIO, 1990-2015

Table 5

Years	Age-Dependency ratio ⁽¹⁾
1990	689
1991	655
1992	642
1993	623
1994	607
1995	594
1996	578
1997	561
1998	538
1999	516
2000	504
2001	504
2002	499
2003	499
2004	494
2005	485
2006	462
2007	463
2008	441
2009	439
2010	421
2011	434
2012	433
2013	429
2014	424
2015	427

Source: National Bureau of Statistics

Notes:

(1) Age-Dependency ratio is the ratio of persons in the dependent age(under 15 and 65+) to those in the economically productive age (15-64) measured per thousand population

**REGISTERED LIVE BIRTHS BY YEAR, MONTH OF REGISTRATION,
SEX AND STATUS, 2011-2015**

Table 6

Month/Year	2011	2012	2013	2014	2015⁽¹⁾
January	103	129	159	138	112
February	103	118	115	89	130
March	130	140	107	159	108
April	144	150	157	137	161
May	160	185	147	149	135
June	135	116	123	105	164
July	152	137	144	165	
August	130	150	127	119	
September	135	131	117	124	
October	151	127	124	130	
November	146	132	112	126	
December	136	130	134	116	
<u>TOTAL</u>	<u>1,625</u>	<u>1,645</u>	<u>1,566</u>	<u>1,557</u>	<u>810</u>
<u>SEX</u>					
Males	807	839	800	795	427
Females	818	806	766	762	383
<u>LEGITIMACY STATUS</u>					
Born within Wedlock (legitimate)	355	338	329	348	192
<u>Born out of Wedlock (illegitimate)</u>					
of which					
Acknowledged by the father	992	1,005	1,005	966	500
Other	278	302	232	243	118

Source: National Bureau of Statistics/Civil Status Office

(1) Relates to the first six months

REGISTERED LIVE BIRTHS BY BIRTH ORDER, LEGITIMACY STATUS AND AGE GROUP OF MOTHER, 2015⁽¹⁾

Table 7

Legitimacy Status and Age Group	Total Births	Number of births						
		1	2	3	4	5	6	7+
LEGITIMACY STATUS								
Born within Wedlock (legitimate)	192	60	71	42	11	4	2	2
Born out of Wedlock (illegitimate)								
of which								
Acknowledged by the father	500	209	179	72	26	8	4	2
Other	118	67	22	14	6	7	1	1
TOTAL	810	336	272	128	43	19	7	5
AGE-GROUP								
Under 15	1	1	0	0	0	0	0	0
15-19	86	78	7	1	0	0	0	0
20-24	212	116	74	20	2	0	0	0
25-29	219	89	88	29	8	3	2	0
30-34	173	40	74	38	14	5	1	1
35-39	90	9	24	30	13	9	2	3
40-44	27	3	5	9	5	2	2	1
45+	2	0	0	1	1	0	0	0

Source: National Bureau of Statistics/Civil Status Office

(1) Relates to the first six months

REGISTERED LIVE BIRTHS BY DISTRICT OF RESIDENCE AND AGE GROUP OF MOTHER, 2015⁽¹⁾

Table 8

District of Residence	Age Group								Total
	Under 15	15-19	20-24	25-29	30-34	35-39	40-44	45+	
Anse Aux Pins	0	4	17	9	6	1	1	0	38
Anse Boileau	0	5	15	8	6	3	2	0	39
Au Cap	0	2	8	7	5	4	0	0	26
Anse Etoile	0	2	11	13	10	3	2	0	41
Anse Royale	0	3	5	15	10	9	3	0	45
Bel Air	0	2	5	4	4	1	0	0	16
Baie Lazare	0	6	4	9	7	6	1	0	33
Belombre	0	3	8	6	6	0	2	0	25
Baie Sainte Anne	0	3	5	15	4	4	1	0	32
Beau Vallon	0	2	13	4	10	4	1	0	34
Cascade	0	3	3	11	10	5	1	0	33
English River ⁽²⁾	0	10	23	15	19	13	4	0	84
Glacis	0	1	8	9	7	3	1	1	30
Grand Anse Mahe	0	4	7	4	8	3	0	0	26
Grand Anse Praslin	0	7	9	8	10	2	0	0	36
La Digue	0	2	4	3	3	4	0	0	16
Les Mamelles	0	4	6	7	3	1	2	0	23
Mont Buxton	0	3	8	13	7	7	3	0	41
Mont Fleuri	0	2	10	11	9	3	0	0	35
Plaisance	1	2	4	10	4	2	0	0	23
Port Glaud	0	3	6	3	3	0	1	0	16
Pointe Larue	0	5	9	8	9	4	0	1	36
Roche Caiman	0	4	8	6	3	3	1	0	25
Saint Louis	0	3	10	12	5	2	1	0	33
Takamaka	0	1	6	9	5	3	0	0	24
Other Islands	0	0	0	0	0	0	0	0	0
Total	1	86	212	219	173	90	27	2	810

Source: National Bureau of Statistics/Civil Status Office

(1) Relates to the first six months

(2) Includes births to mothers residing at Perseverance

DISTRICT POPULATION, 2010-2015

Table 9

District	Census 2010	Mid Year Estimates				
		2011	2012	2013	2014	2015
Anse Aux Pins	3,850	3,702	3,738	3,808	3,868	3,955
Anse Boileau	4,011	3,856	3,894	3,967	4,029	4,120
Au Cap	4,233	4,070	4,110	4,187	4,252	4,348
Anse Etoile	4,717	4,535	4,580	4,665	4,738	4,845
Anse Royale	4,168	4,007	4,047	4,122	4,187	4,281
Bel Air	2,857	2,747	2,774	2,826	2,870	2,935
Baie Lazare	3,608	3,469	3,503	3,568	3,624	3,706
Belombre	3,708	3,565	3,600	3,667	3,725	3,809
Baie Saint Anne	4,876	4,688	4,734	4,823	4,898	5,009
Beau Vallon	4,120	3,961	4,000	4,075	4,139	4,232
Cascade	4,267	4,103	4,143	4,220	4,286	4,383
English River	4,196	4,034	4,074	4,150	4,215	4,310
Glacis	3,833	3,685	3,722	3,791	3,850	3,937
Grand Anse Mahe	3,106	2,986	3,016	3,072	3,120	3,190
Grand Anse Praslin	3,727	3,583	3,619	3,686	3,744	3,828
La Digue	2,761	2,655	2,681	2,731	2,774	2,836
Les Mamelles	2,667	2,564	2,590	2,638	2,679	2,740
Mont Buxton	3,089	2,970	2,999	3,055	3,103	3,173
Mont Fleuri	3,419	3,287	3,320	3,382	3,435	3,512
Other Islands	1,042	1,002	1,012	1,031	1,047	1,070
Plaisance	3,781	3,635	3,671	3,740	3,798	3,884
Port Glaud	2,572	2,473	2,497	2,544	2,584	2,642
Pointe Larue	3,071	2,953	2,982	3,037	3,085	3,155
Roche Caiman	3,232	3,107	3,138	3,197	3,247	3,320
Saint Louis	3,209	3,085	3,116	3,174	3,224	3,296
Takamaka	2,825	2,716	2,743	2,794	2,838	2,902
Total	90,945	87,441	88,303	89,949	91,359	93,419

Source: National Bureau of Statistics

Note: Assuming similar population distribution as Census 2010

New district estimates to include Perseverance will be published as an addendum to this publication in the near future.

Chart 2:
Population Pyramid, Mid 2015 Population Estimates

Age Group

