

National Bureau of Statistics

STATISTICAL

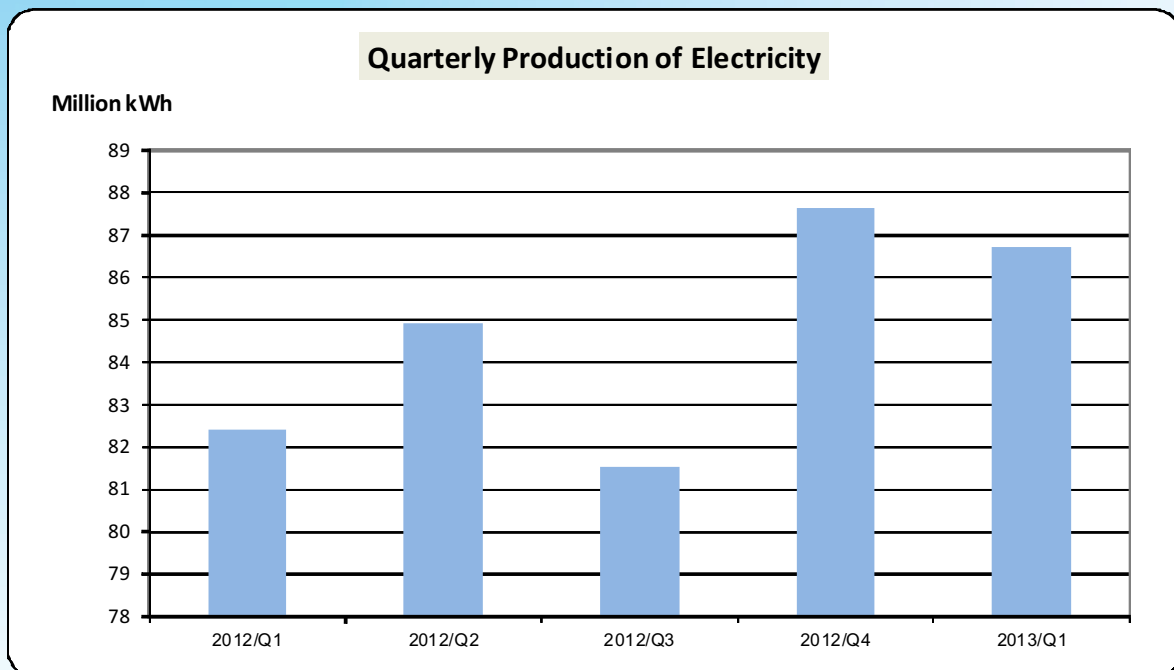
BULLETIN

PRODUCTION STATISTICS NO.2 of 2013

PRODUCTION STATISTICS

This bulletin presents a set of production figures for some of the most important items produced. Table 1 compares production between quarter 1 of 2013 and that of the same period of 2012 and shows the percentage change, whereas Tables 2

to 6 give annual figures for the years 2008-2012 and quarterly figures for 2011-2013. Graphical representations of selected products are also shown in Charts 1 to 9.



National Bureau of Statistics
June 2013

National Bureau of Statistics

CARAVELLE HOUSE - MANGLIER STREET, P.O. BOX 206 - VICTORIA - MAHE - SEYCHELLES, Tel: +248 611650 - Fax: +248 225634/225339
E-mail: ceo@nbs.gov.sc, stats@nbs.gov.sc - Website: www.nbs.gov.sc

"Your stepping-stone for informed decisions"

Table 1: Comparison of Production in Q1 2012 and Q1 2013

Production Indicators	Unit	Quarters		% change
		2013/Q1	2012/Q1	2013 Q1 /2012 Q1
Crop Production				
Copra (production)	(Tonnes)	6.7	0.3	2222%
Cinnamon (production)	(Tonnes)	2.9	18.2	-84%
Tea (green leaf)	(Tonnes)	3.1	11.9	-74%
Livestock Slaughters				
Cattle	(Nos)	10	1	900%
Pigs	(Nos)	1,533	1,616	-5%
Chicken	(Nos)	63,490	64,890	-2%
Chicken				
Layer chicks	(Nos)	5,725	0	0%
Broiler chicks	(Nos)	31,850	8,000	298%
Eggs	(Nos)	5,890,000	6,430,000	-8%
Fish				
Fish catch ⁽¹⁾	(Tonnes)	...	589	
Tuna (canned)	(Tonnes)	10,769	9,444	14%
Smoked Fish	(Kgs)	9,916	8,772	13%
Beverages & Tobacco				
Beer & Stout	(KLtrs)	1,165	1,265	-8%
Smirnoff	(KLtrs)	82	59	40%
Spirits	(KLtrs)	105	56	88%
Soft drinks	(KLtrs)	1,481	1,670	-11%
Mineral Water	(KLtrs)	1,982	1,503	32%
Juices	(KLtrs)	11	93	-88%
Cigarettes	(Millions)	10	12	-21%
Sauces & Dairy Products				
Ice Cream	(KLtrs)	100	78	28%
Sauces	(KLtrs)	78	97	-19%
Manufactures				
Paints	(Ltrs)	88,443	83,786	6%
Soap	(Kgs)	20,555	17,700	16%
Toilet paper	(Rolls)	1,259,100	1,452,360	-13%
Construction Products				
Blocks	(Nos)	897,185	1,073,948	-16%
Plastering dust	(Tonnes)	8,561	8,624	-1%
Crusher dust	(Tonnes)	33,125	44,050	-25%
Aggregate	(Tonnes)	27,559	34,246	-20%
Electricity & Water				
Electricity Production	(kWh)	87	82	5%
Treated water Production	(kLtrs)	4,334	4,451	-3%
Treated water Consumption	(kLtrs)	1,876	1,878	0%
Telecom Services				
International calls	(Hrs)	77,404	85,511	-9%
Local calls	(Hrs)	1,370,373	1,241,712	10%
Telephone exchange lines	(Nos)	24,212	24,027	1%
Mobile accounts	(Nos)	139,905	139,979	0%

Source: National Bureau of Statistics - (from production returns)

Notes:

⁽¹⁾ Data for Q1 not yet available

PRODUCTION INDICATORS 2008- 2013

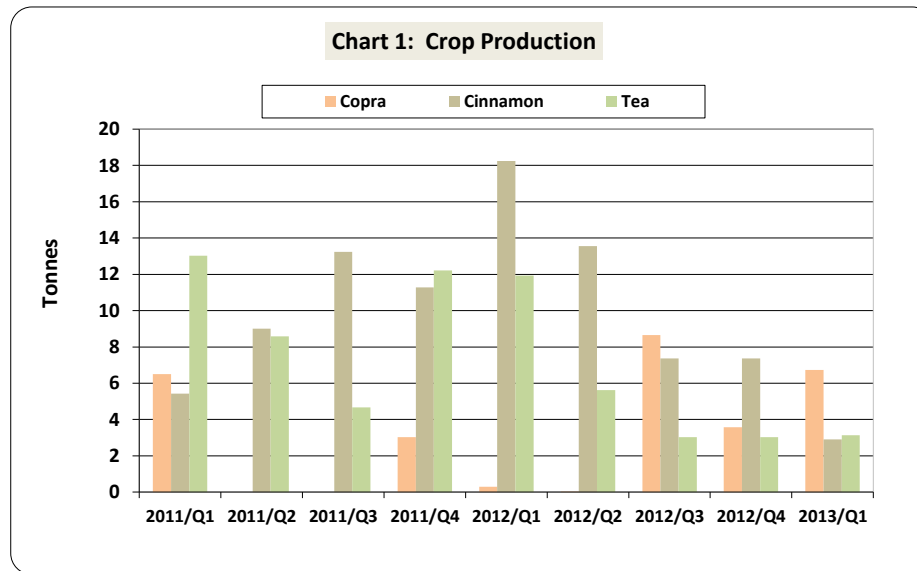
Table 2

	Quantity	Years					Quarters								
		2008	2009	2010	2011	2012	2011/Q1	2011/Q2	2011/Q3	2011/Q4	2012/Q1	2012/Q2	2012/Q3	2012/Q4	2013/Q1
CROP PRODUCTION															
Copra (Production)	(Tonnes)	29	31	19	10	13	7	0	0	3	0	0	9	4	7
Cinnamon (Deliveries to warehouse)	(Tonnes)	94	63	23	39	47	5	9	13	11	18	14	7	7	3
Tea (Green Leaf)	(Tonnes)	137	63	49	38	24	13	9	5	12	12	6	3	3	3

Source: National Bureau of Statistics - (from production returns)

Notes:

Annual figures may not add up due to rounding



PRODUCTION INDICATORS 2008 - 2013

Table 3

	Quantity	Years					Quarters									
		2008	2009	2010	2011	2012	2011/Q1	2011/Q2	2011/Q3	2011/Q4	2012/Q1	2012/Q2	2012/Q3	2012/Q4	2013/Q1	
LIVESTOCK SLAUGHTERS																
Cattle	(Nos)	54	35	34	15	25	8	3	0	4	1	3	9	12	10	
Pigs	(Nos)	7,293	6,210	5,363	6,555	6,113	1,877	1,432	1,466	1,780	1,616	1,211	1,572	1,714	1,533	
Chickens	(Nos)	768,115	657,783	550,685	622,303	251,915	78,835	228,632	213,787	101,049	64,890	46,230	64,559	76,236	63,490	
OTHER PRODUCTION																
Eggs	(Nos)	23,750,000	25,225,797	22,062,649	26,557,600	23,890,000	6,790,000	7,007,600	6,330,000	6,430,000	5,900,000	5,650,000	6,200,000	6,140,000	5,890,000	
Layer Chicks	(Nos)	86,678	81,430	97,411	84,761	24,460	19,300	16,211	23,200	26,050	0	0	12,910	11,550	5,725	
Broiler Chicks	(Nos)	1,035,315	807,736	613,598	697,741	152,860	169,112	250,552	211,500	66,577	8,000	23,200	61,460	60,200	31,850	
FISH																
Canned Tuna	(Tonnes)	28,907	29,110	30,338	30,152	31,946	8,703	7,127	7,903	6,419	9,444	6,923	8,100	7,479	10,769	
Fish catch ⁽¹⁾⁽²⁾	(Tonnes)	4,800	3,023	2,597	2,875	2,503	844	614	751	666	589	692	489	733	...	
Smoked Fish	(Kgs)	30,822	26,566	29,582	29,398	27,688	6,850	7,118	8,486	6,944	8,772	6,071	5,566	7,279	9,916	

Source: National Bureau of Statistics - (from production returns)

Notes:

⁽¹⁾ Data for Q1 2013 not yet available

⁽²⁾ These figures do not include fish landed at the Yacht Club and Marine Charter, nor do they include fish landed on Sundays and Public holidays

Chart 2: Production of Canned Tuna

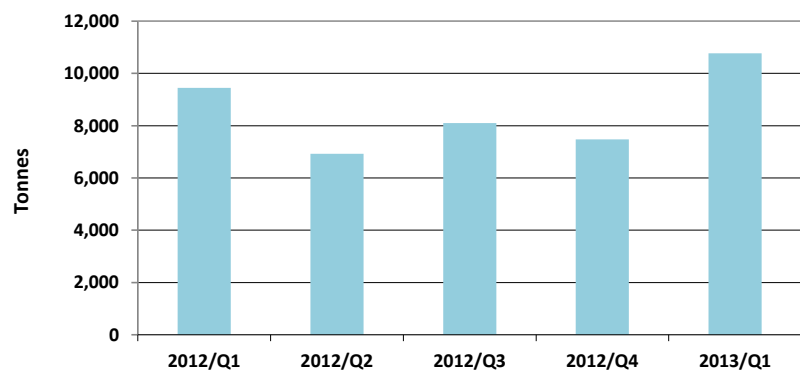
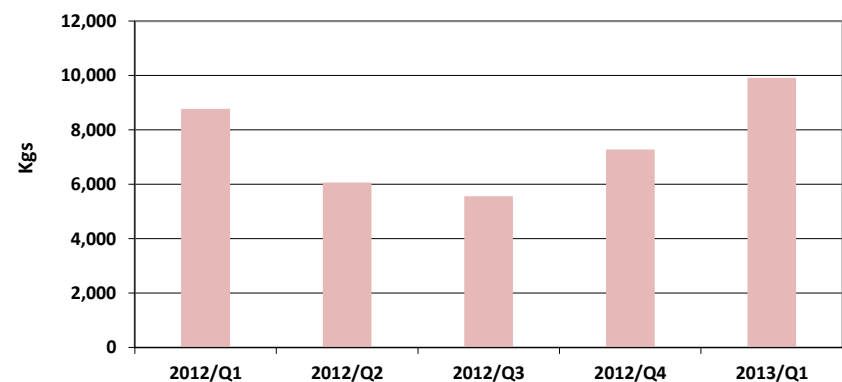


Chart 3: Production of Smoked fish

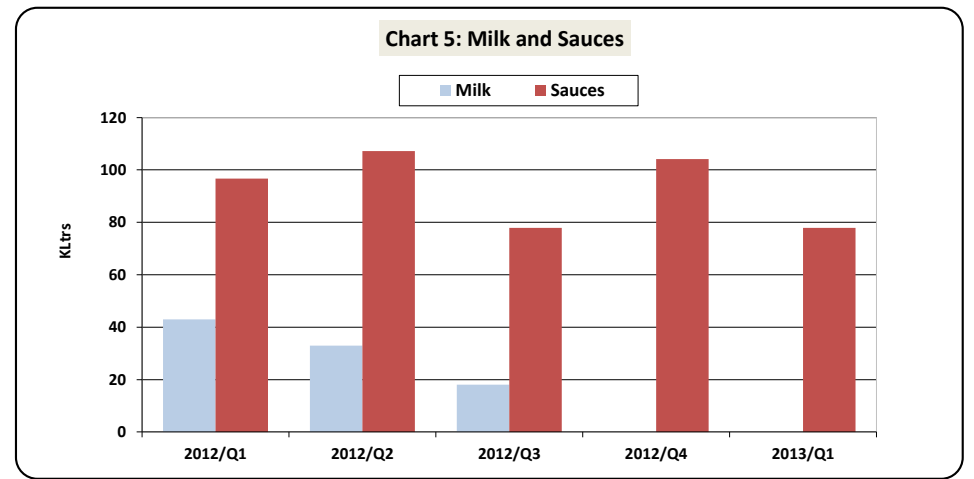
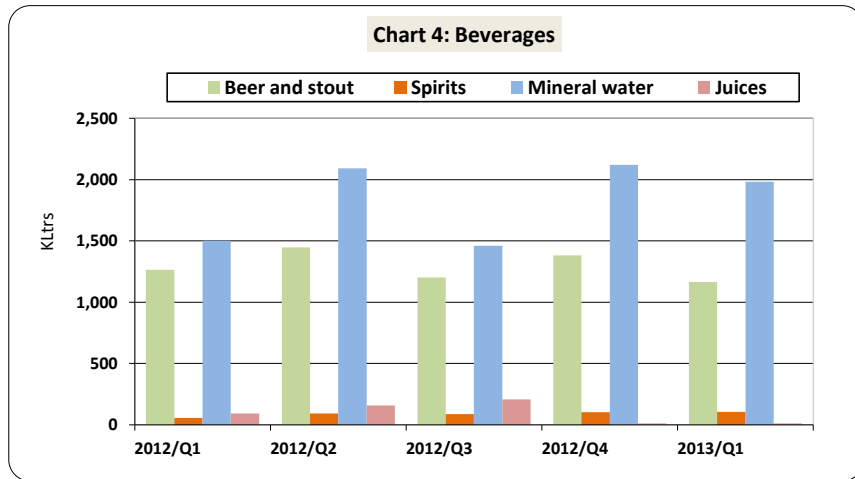


PRODUCTION INDICATORS 2008 - 2013

Table 4

	Quantity	Years					Quarters								
		2008	2009	2010	2011	2012	2011/Q1	2011/Q2	2011/Q3	2011/Q4	2012/Q1	2012/Q2	2012/Q3	2012/Q4	2013/Q1
BEVERAGES AND TOBACCO PRODUCTION															
Beer and stout	(KLtrs)	6,058	4,218	4,781	5,400	5,296	1,216	1,255	1,349	1,580	1,265	1,448	1,201	1,382	1,165
Smirnoff	(KLtrs)	287	246	213	127	262	37	43	23	24	59	76	78	49	82
Spirits	(KLtrs)	137	221	268	319	340	50	72	84	114	56	92	88	104	105
Soft drinks	(KLtrs)	6,160	5,005	5,936	6,984	6,938	1,552	1,823	1,722	1,888	1,670	2,055	1,492	1,721	1,481
Mineral water	(KLtrs)	5,203	4,482	5,995	6,219	7,175	1,437	1,533	1,771	1,477	1,503	2,091	1,460	2,121	1,982
Juices	(KLtrs)	2,517	2,221	1,604	1,017	468	278	253	197	290	93	157	207	12	11
Squash	(KLtrs)	19	75	46	21	4	12	9	0	0	3	1	0	0	0
Cigarettes	(Million)	31	40	47	55	60	13	11	17	15	12	16	14	18	10
DAIRY PRODUCTS, JAM AND SAUCES															
Ice-Cream	(KLtrs)	514	346	325	328	330	77	88	78	85	78	76	85	91	100
Milk	(KLtrs)	1,519	619	436	108	94	0	16	88	4	43	33	18	0	0
Yoghurt	(KLtrs)	112	79	49	30	9	10	6	9	6	1	5	3	0	0
Jam	(KLtrs)	7	13	3	9	12	4	1	2	1	2	2	5	4	3
Sauces	(KLtrs)	245	196	313	358	386	63	92	93	109	97	107	78	104	78

Source: National Bureau of Statistics - (from production returns)



PRODUCTION INDICATORS 2008 - 2013

Table 5

	Quantity	Years					Quarters									
		2008	2009	2010	2011	2012	2011/Q1	2011/Q2	2011/Q3	2011/Q4	2012/Q1	2012/Q2	2012/Q3	2012/Q4	2013/Q1	
MANUFACTURES																
Compound Animal Feed	(Tonnes)	13,053	10,015	9,053	4,088	-	1,793	2,295	0	0	0	0	0	0	0	
Paints	(Litres)	382,833	337,091	383,100	362,536	386,907	83,355	88,469	84,627	106,085	83,786	79,995	93,033	130,093	88,443	
Soaps	(Kgs)	-	126,238	87,803	69,261	56,595	15,926	17,465	17,515	18,355	17,700	9,750	17,965	11,180	20,555	
Toilet Paper	(Rolls)	4,848,210	4,103,520	4,548,030	4,792,753	4,431,230	1,216,163	1,055,010	1,252,220	1,269,360	1,452,360	929,190	1,048,950	1,000,730	1,259,100	
CONSTRUCTION PRODUCTS																
Blocks	(Nos)	4,644,152	3,682,240	4,203,586	4,246,782	4,057,691	904,391	1,095,815	1,150,218	1,096,358	1,073,948	1,062,161	979,017	942,565	897,185	
Plastering Dust	(Tonnes)	46,238	43,029	40,657	40,579	36,460	9,916	10,193	10,481	9,989	8,624	8,168	9,559	10,109	8,561	
Crusher/Concreting Dust	(Tonnes)	168,822	159,828	180,520	181,418	155,946	43,895	41,878	45,673	49,972	44,050	38,424	37,895	35,577	33,125	
Aggregate	(Tonnes)	163,246	130,553	156,710	162,502	123,759	37,041	34,141	40,985	50,336	34,246	31,466	32,539	25,508	27,559	
Crusher Waste	(Tonnes)	3,609	2,500	3,273	4,863	4,723	1,759	859	918	1,327	1,131	1,366	1,474	752	769	

Source: National Bureau of Statistics - (from production returns)

Chart 6: Blocks

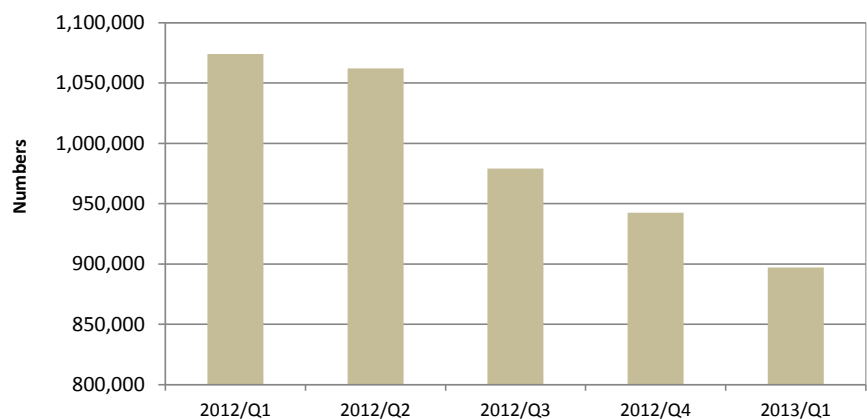
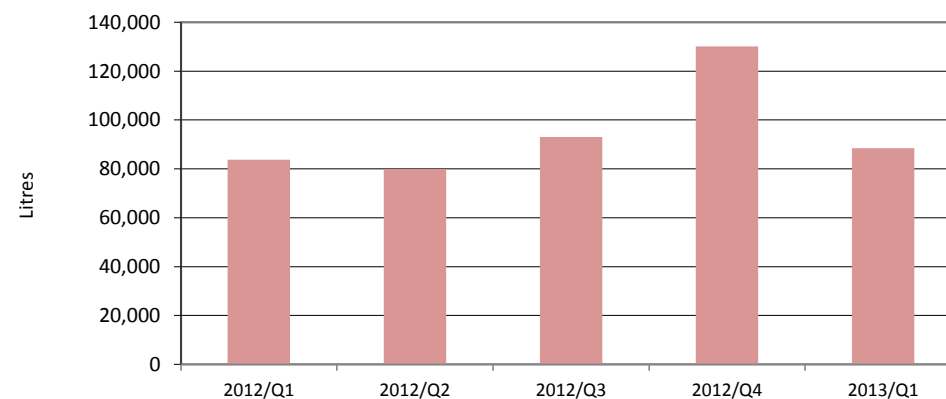


Chart 7: Paints



PRODUCTION INDICATORS 2008 - 2013

Table 6

	Quantity	Years					Quarters								
		2008	2009	2010	2011	2012	2011/Q1	2011/Q2	2011/Q3	2011/Q4	2012/Q1	2012/Q2	2012/Q3	2012/Q4	2013/Q1
ELECTRICITY PRODUCTION ⁽¹⁾	(Million kWh)	269	276	301	324	336	79	83	80	82	82	85	82	88	87
Mahe		238	244	267	286	297	70	73	71	72	73	75	72	77	77
Praslin		31	32	35	37	40	9	10	9	10	10	10	10	11	10
TREATED WATER CONSUMPTION ⁽¹⁾	('000 kLtrs)	7,116	7,411	7,356	6,511	8,772	1,718	1,579	1,478	1,736	1,878	1,813	1,563	1,642	1,876
Mahe		6,091	6,316	6,294	5,555	5,960	1,466	1,341	1,256	1,492	1,614	1,561	1,369	1,416	1,618
Praslin		773	786	791	707	677	187	169	170	182	197	191	136	153	187
La Digue		251	309	271	250	259	65	70	53	62	67	61	58	73	71
TREATED WATER PRODUCTION ⁽¹⁾	('000 kLtrs)	11,652	10,783	10,862	12,675	15,429	2,918	2,462	2,959	4,336	4,451	3,359	3,400	4,219	4,334
Mahe		10,379	9,371	9,456	11,297	13,417	2,530	2,147	2,633	3,987	3,989	2,853	2,904	3,671	3,893
Praslin		974	1,061	1,073	1,039	1,196	299	237	250	254	317	315	262	302	283
La Digue		299	351	332	340	816	89	79	77	95	144	191	234	246	158
TELECOM SERVICES															
International Calls	(hrs)	269,468	286,978	306,371	347,499	327,381	99,478	87,459	82,465	78,097	85,511	77,890	87,320	76,660	77,404
Local Calls	(hrs)	3,589,385	3,682,465	4,281,946	4,919,496	5,161,075	1,189,825	1,227,721	1,257,144	1,244,806	1,241,712	1,245,659	1,313,255	1,360,449	1,370,373
Telephone Exchange Lines ⁽²⁾	(Nos)	26,078	26,786	29,033	24,226	24,111	24,035	24,176	24,007	24,226	24,027	23,975	23,991	24,111	24,212
Mobile Accounts ⁽²⁾	(Nos)	91,776	126,858	126,635	137,809	142,164	120,709	132,808	134,996	137,809	139,979	129,765	136,359	142,164	139,905

Source: National Bureau of Statistics - (from production returns)

Notes:

⁽¹⁾ Totals may not add up due to rounding

⁽²⁾ Annual figures refer to end of year period and not sum of quarterly figures

