



# National Bureau of Statistics

## STATISTICAL

# BULLETIN

Population and Vital Statistics: No 2 of 2012

August 2012

### POPULATION AND VITAL STATISTICS 2012

- ◆ Table 1. Mid Year Population Estimates, Registered Births and Deaths, 1971-2012
- ◆ Table 2a. Components of Population change, 2002-2012
- ◆ Table 2b. Population Growth, 1979-2012
- ◆ Table 3. Mid Year Population Estimates, 2012
- ◆ Table 4. Mid Year Population Estimates by Broad Age Group and Sex, 2007–2012
- ◆ Table 5. Age-Dependency Ratio, 1990-2012
- ◆ Table 6. Registered Live Births by Year, Month of Registration, Sex and Status, 2007-2012

### Charts

Chart 1: Population Growth, 1979–2012

Chart 2: Population Pyramid: Mid 2012 Population Estimates

---

## National Bureau of Statistics

CARAVELLE HOUSE - MANGLIER STREET, P.O. BOX 206 - VICTORIA - MAHE - SEYCHELLES, Tel: +248 611650 - Fax: +248 225634/225339  
E-mail: ceo@nbs.gov.sc, stats@nbs.gov.sc - Website: www.nbs.gov.sc

"Your stepping-stone for informed decisions"

## MID YEAR POPULATION - 2012

1. The population of Seychelles is estimated at 88,303 persons as at 30<sup>th</sup> June 2012. This represents an increase of 862 persons or an annual growth rate of 1.0% since 1<sup>st</sup> July 2011. Table 1 shows the mid-year population estimates, vital events and rates for the period 1971-2012.
2. Table 2a shows the components of population change for the period 2002-2012. During the period July 2011 to June 2012, an actual growth rate of 1.0% was recorded while the rate of natural increase (births less deaths) was 2.5%. On a longer time scale the population increased from 74,205 in 1994 to 88,303 in 2012 with an annual growth rate of 1.0% per annum. If migration is discounted, the rate of natural increase for that same period is 1.4% per annum which is the rate at which the Seychelles population would double in 54 years.
3. Table 3 presents the mid 2012 population by single years of age. In 2012 there were 43,313 males and 44,990 females or an approximate ratio of 963 men for every 1,000 women. The population pyramid (see chart) presents a graphic display of the mid-2012 population.
4. Table 4 shows the mid-year population estimates by sex and broad age groups for the years 2007-2012. The proportion of persons of prime working age (20-44) has decreased from 42.0% in 2007 to 38.9% in 2012. Conversely the proportion aged 45-64 has increased from 18.3% in 2007 to 22.9% during that same period.
5. Table 5 shows the age-dependency ratio from 1990-2012. The age-dependency ratio which measures the number of persons in the dependent ages (under 15 and 65+) to those in the economically productive ages (15-64) has decreased from 689 in 1990 to 433 in 2012.

### BIRTHS

6. Table 6 shows the status of births in Seychelles since 2007. Of the 1,688 births between 1<sup>st</sup> July 2011 and 30<sup>th</sup> June 2012, 850 occurred in the second half of 2011 and 838 occurred in the first half of 2012.
7. The proportion of nuptial births has decreased from 21.0% in 2007 to 20.5% for the first six months of 2012; the proportion of acknowledged births (where the baby has been recognised by the father) has also shown a decrease from 61.9% in 2007 to 61.7% in the first six months of 2012. The proportion of non-acknowledged births has increased from 17.3% in 2007 to 17.8% in the first six months of 2012.

### DEATHS

8. There were 650 deaths registered in the period July 2011 to June 2012. Of these, 328 occurred during the last six months of 2011 whilst 322 occurred in the first six months of 2012. [The number of deaths in Table 2 excludes deaths occurring to persons not on the National Population Database (NPD). Those persons are excluded from the calculation of the population estimates].
9. The total number of infant deaths (death to babies aged less than one year) for the same period was 21. Of these, 9 occurred in the last six months of 2011 and 12 in the first half of 2012.

### MIGRATION

10. The net migration figure of (-176) persons for the period July 2011 to June 2012 (Table 2) was made up of 302 male out-migrants and 126 female in-migrants.

MID-YEAR POPULATION ESTIMATES, BIRTHS AND DEATHS, 1971-2012

Table 1

Year	Mid-year Population	No. of	Birth <sup>(1)</sup>	No. of	Death <sup>(1)</sup>	Registered	Infant <sup>(2)</sup>
		Registered	Rate	Registered	Rate	Infant	Mortality
		Births		Deaths		Deaths	
1971	54,695	1,837	33.6	463	8.5	61	33.2
1972	56,029	1,723	30.8	529	9.4	62	36.0
1973	56,892	1,639	28.8	474	8.3	51	31.1
1974	57,937	1,860	32.1	496	8.6	73	39.2
1975	59,292	1,806	30.5	433	7.3	64	35.4
1976	60,504	1,642	27.1	466	7.7	53	32.3
1977	61,786	1,599	25.9	477	7.7	69	43.2
1978	62,150	1,796	28.9	466	7.5	47	26.2
1979	62,686	1,730	27.6	436	7.0	44	25.4
1980	63,261	1,830	28.9	444	7.0	32	17.5
1981	64,035	1,802	28.1	442	6.9	31	17.2
1982	64,413	1,552	24.1	482	7.5	30	19.3
1983	64,335	1,662	25.8	452	7.0	24	14.4
1984	64,717	1,739	26.9	487	7.5	24	13.8
1985	65,244	1,729	26.5	468	7.2	31	17.9
1986	65,652	1,722	26.2	498	7.6	31	18.0
1987 <sup>(3)</sup>	68,499	1,684	24.5	505	7.4	31	18.4
1988	68,755	1,643	23.8	504	7.3	28	17.0
1989	69,167	1,600	23.0	566	8.1	29	18.1
1990	69,507	1,617	23.1	543	7.7	21	13.0
1991 <sup>(4)</sup>	70,439	1,706	24.2	542	7.7	22	12.9
1992 <sup>(5)</sup>	70,763	1,601	22.6	522	7.4	19	11.9
1993	72,253	1,689	23.4	597	8.3	22	13.0
1994 <sup>(6)</sup>	74,205	1,700	22.9	562	7.6	15	8.8
1995	75,304	1,582	21.0	525	7.0	29	18.3
1996	76,417	1,611	21.1	566	7.4	15	9.3
1997	77,319	1,475	19.1	603	7.8	12	8.1
1998 <sup>(7)</sup>	78,846	1,412	17.9	570	7.2	12	8.5
1999	80,410	1,460	18.2	560	7.0	15	10.3
2000 <sup>(7)</sup>	81,131	1512	18.6	553	6.8	15	9.9
2001	81,202	1,440	17.7	554	6.8	19	13.2
2002 <sup>(8)</sup>	83,723	1,481	17.7	647	7.7	26	17.6
2003 <sup>(8)</sup>	82,781	1,498	18.1	668	8.1	25	16.7
2004 <sup>(9)</sup>	82,475	1,435	17.4	611	7.2	17	11.8
2005	82,858	1,536	18.5	673	8.1	16	10.4
2006	84,600	1,467	17.3	664	7.8	14	9.5
2007	85,033	1,499	17.6	630	7.4	16	10.7
2008	86,956	1,546	17.8	662	7.6	20	12.9
2009	87,298	1,580	18.1	684	7.8	17	10.8
2010 <sup>(10)</sup>	89,770	1,504	16.8	664	7.4	21	14.0
2011 <sup>(11)</sup>	87,441	1,625	18.6	691	7.9	16	9.8
2012	88,303						

Source: National Bureau of Statistics/Civil Status Office

Notes:

- <sup>(1)</sup> Measured per thousand of mid-year population
- <sup>(2)</sup> Deaths of infants under one year of age per 1000 live births
- <sup>(3)</sup> The mid year population estimates for 1987-1993 have been rebased using the 1987 census data
- <sup>(4)</sup> 2 persons aged 36 & 37 who were registered in 1991 are not included in births in this table
- <sup>(5)</sup> 2 persons aged 27 & 50 who were registered in 1992 are not included in births in this table
- <sup>(6)</sup> The population has been rebased using the 1994 Census results
- <sup>(7)</sup> The population has been adjusted due to misreporting of births from Civil Status
- <sup>(8)</sup> The original census figure has been adjusted by 2.4% to take into account undercounts
- <sup>(9)</sup> The population has been rebased using the 2002 Census results.
- <sup>(10)</sup> The population has been rebased using the 2010 Census results.
- <sup>(11)</sup> The population has been adjusted due to misreporting of births from Civil Status

**COMPONENTS OF POPULATION CHANGE, 2002 - 2012**

**Table 2a**

<b>Period</b>	<b>Population at beginning of period</b>	<b>Births</b>	<b>Deaths</b>	<b>Migration</b>	<b>Population at end of period</b>
Jul-Dec 2002 <sup>(1)</sup>	83,723	724	-287	-1,984	82,176
Jan-Jun 2003	82,176	771	-323	157	82,781
Jul-Dec 2003	82,781	727	-331	-1,186	81,991
Jan-Jun 2004	81,991	748	-276	12	82,475
Jul-Dec 2004	82,475	687	-319	-396	82,447
Jan-Jun 2005	82,447	808	-297	-106	82,852
Jul-Dec 2005	82,852	728	-358	-505	82,717
Jan-Jun 2006	82,717	732	-363	1,514	84,600
Jul-Dec 2006	84,600	735	-289	-1,104	83,942
Jan-Jun 2007	83,942	767	-315	639	85,033
Jul-Dec 2007	85,033	732	-290	-168	85,307
Jan-Jun 2008	85,307	719	-340	1,270	86,956
Jul-Dec 2008	86,956	827	-296	-348	87,139
Jan-Jun 2009	87,139	834	-298	-377	87,298
Jul-Dec 2009 <sup>(2)</sup>	87,298	746	-358	-564	87,122
Jan-Jun 2010	87,122	740	-316	-1,021	86,525
Jul-Dec 2010 <sup>(3)</sup>	89,770	764	-331	-2,113	88,090
Jan-Jun 2011 <sup>(4)</sup>	88,090	775	-324	-1,100	87,441
Jul-Dec 2011 <sup>(5)</sup>	87,441	850	-328	310	88,273
Jan-Jun 2012	88,273	838	-322	-486	88,303

Source: National Bureau of Statistics from information provided by Civil Status Office and Immigration Division

**Notes:**

- <sup>(1)</sup> The population has been rebased using the 2002 Census results
- <sup>(2)</sup> 1 infant death excluded from population estimates as it was not registered as a birth by Civil Status Office
- <sup>(3)</sup> The population has been adjusted and rebased using the 2010 Census results
- <sup>(4)</sup> The population has been adjusted due to misreporting of births by Civil Status Office
- <sup>(5)</sup> 1 infant death excluded from population estimates as it was not registered as a birth by Civil Status Office

POPULATION AND POPULATION GROWTH RATES, 1979-2012

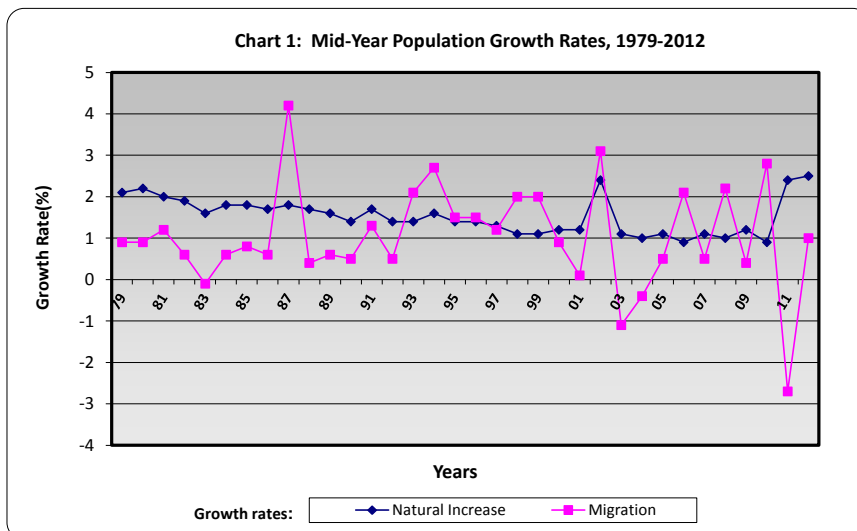
Table 2b

Period (mid-year)	Mid Year Population	Growth rate with	
		Natural Increase	Migration
1979	62,686	2.1	0.9
1980	63,261	2.2	0.9
1981	64,035	2.0	1.2
1982	64,413	1.9	0.6
1983	64,335	1.6	-0.1
1984	64,717	1.8	0.6
1985	65,244	1.8	0.8
1986	65,652	1.7	0.6
1987 <sup>(1)</sup>	68,499	1.8	4.2
1988	68,755	1.7	0.4
1989	69,167	1.6	0.6
1990	69,507	1.4	0.5
1991	70,438	1.7	1.3
1992	70,763	1.4	0.5
1993	72,253	1.4	2.1
1994 <sup>(2)</sup>	74,205	1.6	2.7
1995	75,304	1.4	1.5
1996	76,417	1.4	1.5
1997	77,319	1.3	1.2
1998	78,846	1.1	2.0
1999	80,410	1.1	2.0
2000	81,131	1.2	0.9
2001	81,202	1.2	0.1
2002 <sup>(3)</sup>	83,723	2.4	3.1
2003 <sup>(4)</sup>	82,781	1.1	-1.1
2004	82,475	1.0	-0.4
2005	82,852	1.1	0.5
2006	84,600	0.9	2.1
2007	85,033	1.1	0.5
2008	86,956	1.0	2.2
2009	87,298	1.2	0.4
2010 <sup>(5)</sup>	89,770	0.9	2.8
2011	87,441	2.4	-2.7
2012	88,303	2.5	1.0

Source: National Bureau of Statistics

Notes:

- <sup>(1)</sup> From 1987-1993 the population estimates have been rebased using the 1987 Census results
- <sup>(2)</sup> From 1994-2001 the population has been rebased using the 1994 Census results
- <sup>(3)</sup> The 2002 census figure has been adjusted by 2.4% to take into account undercounts
- <sup>(4)</sup> From 2003-2009 the estimates have been rebased on the 2002 Census figure
- <sup>(5)</sup> From 2010 onwards the estimates have been adjusted and rebased on the 2010 Census figure
- <sup>(6)</sup> Natural Increase is Population plus Total Births less Total Deaths



MID-YEAR POPULATION ESTIMATES, 2012

Table 3

Age	Males	Females	Total	Age	Males	Females	Total	Age	Males	Females	Total
0	842	819	1,661	35	584	752	1,336	70	183	230	413
1	777	780	1,557	36	631	698	1,329	71	137	207	344
2	650	564	1,214	37	631	734	1,365	72	160	227	387
3	673	695	1,368	38	814	782	1,596	73	151	197	348
4	600	679	1,279	39	766	706	1,472	74	114	222	336
<b>0-4</b>	<b>3,542</b>	<b>3,537</b>	<b>7,079</b>	<b>35-39</b>	<b>3,426</b>	<b>3,672</b>	<b>7,098</b>	<b>70-74</b>	<b>745</b>	<b>1,083</b>	<b>1,828</b>
5	684	691	1,375	40	802	769	1,571	75	117	198	315
6	666	585	1,251	41	766	675	1,441	76	111	154	265
7	644	681	1,325	42	785	680	1,465	77	91	174	265
8	602	651	1,253	43	524	710	1,234	78	94	175	269
9	682	617	1,299	44	578	708	1,286	79	102	159	261
<b>5-9</b>	<b>3,278</b>	<b>3,225</b>	<b>6,503</b>	<b>40-44</b>	<b>3,455</b>	<b>3,542</b>	<b>6,997</b>	<b>75-79</b>	<b>515</b>	<b>860</b>	<b>1,375</b>
10	645	641	1,286	45	626	737	1,363	80	60	153	213
11	608	646	1,254	46	624	723	1,347	81	72	126	198
12	632	615	1,247	47	644	605	1,249	82	52	120	172
13	635	544	1,179	48	813	787	1,600	83	45	110	155
14	568	573	1,141	49	650	756	1,406	84	39	102	141
<b>10-14</b>	<b>3,088</b>	<b>3,019</b>	<b>6,107</b>	<b>45-49</b>	<b>3,357</b>	<b>3,608</b>	<b>6,965</b>	<b>80-84</b>	<b>268</b>	<b>611</b>	<b>879</b>
15	740	660	1,400	50	541	626	1,167	85	38	93	131
16	663	661	1,324	51	765	681	1,446	86	27	76	103
17	718	624	1,342	52	639	643	1,282	87	31	65	96
18	797	777	1,574	53	481	433	914	88	26	57	83
19	768	682	1,450	54	570	486	1,056	89	11	51	62
<b>15-19</b>	<b>3,686</b>	<b>3,404</b>	<b>7,090</b>	<b>50-54</b>	<b>2,996</b>	<b>2,869</b>	<b>5,865</b>	<b>85-89</b>	<b>133</b>	<b>342</b>	<b>475</b>
20	822	631	1,453	55	509	543	1,052	90	23	50	73
21	729	663	1,392	56	462	484	946	91	7	39	46
22	593	521	1,114	57	468	384	852	92	8	14	22
23	523	495	1,018	58	448	441	889	93	6	31	37
24	685	643	1,328	59	334	379	713	94	2	12	14
<b>20-24</b>	<b>3,352</b>	<b>2,953</b>	<b>6,305</b>	<b>55-59</b>	<b>2,221</b>	<b>2,231</b>	<b>4,452</b>	<b>90-94</b>	<b>46</b>	<b>146</b>	<b>192</b>
25	795	655	1,450	60	316	351	667	95	3	17	20
26	714	668	1,382	61	282	301	583	96	1	12	13
27	533	716	1,249	62	307	301	608	97	2	9	11
28	530	771	1,301	63	261	276	537	98	2	9	11
29	725	645	1,370	64	245	278	523	99	1	1	2
<b>25-29</b>	<b>3,297</b>	<b>3,455</b>	<b>6,752</b>	<b>60-64</b>	<b>1,411</b>	<b>1,507</b>	<b>2,918</b>	<b>95-99</b>	<b>9</b>	<b>48</b>	<b>57</b>
30	742	745	1,487	65	242	239	481	<b>100+</b>	<b>1</b>	<b>7</b>	<b>8</b>
31	674	784	1,458	66	195	222	417				
32	747	827	1,574	67	226	243	469				
33	627	697	1,324	68	202	223	425	<b>TOTAL</b>	<b>43,313</b>	<b>44,990</b>	<b>88,303</b>
34	637	703	1,340	69	195	188	383				
<b>30-34</b>	<b>3,427</b>	<b>3,756</b>	<b>7,183</b>	<b>65-69</b>	<b>1,060</b>	<b>1,115</b>	<b>2,175</b>				

Source: National Bureau of Statistics

Notes: The figures have been adjusted using the 2010 Population and Housing Census results

**MID-YEAR POPULATION ESTIMATES 2007-2012**

**Table 4**

<b>Sex and Age Group</b>	<b>2007</b>	<b>2008</b>	<b>2009</b>	<b>2010<sup>(3)</sup></b>	<b>2011<sup>(4)</sup></b>	<b>2012</b>
<b><u>MALES</u></b>	<b><u>43,159</u></b>	<b><u>44,999</u></b>	<b><u>45,022</u></b>	<b><u>45,907</u></b>	<b><u>43,127</u></b>	<b><u>43,313</u></b>
0-19	13,765	13,772	13,865	13,859	13,624	13,594
20-44	18,703	20,174	19,888	19,887	17,151	16,957
45-64	8,047	8,474	8,709	9,489	9,677	9,985
65+	2,644	2,579	2,560	2,672	2,675	2,777
<b><u>FEMALES</u></b>	<b><u>41,874</u></b>	<b><u>41,957</u></b>	<b><u>42,276</u></b>	<b><u>43,863</u></b>	<b><u>44,314</u></b>	<b><u>44,990</u></b>
0-19	13,047	13,021	13,128	13,364	13,188	13,185
20-44	17,002	16,662	16,457	17,488	17,360	17,378
45-64	7,489	7,997	8,408	8,885	9,582	10,215
65+	4,336	4,277	4,283	4,126	4,184	4,212
<b><u>BOTH SEXES</u></b>	<b><u>85,033</u></b>	<b><u>86,956</u></b>	<b><u>87,298</u></b>	<b><u>89,770</u></b>	<b><u>87,441</u></b>	<b><u>88,303</u></b>
0-19	26,812	26,793	26,993	27,223	26,812	26,779
20-44	35,705	36,836	36,345	37,375	34,511	34,335
45-64	15,536	16,471	17,117	18,374	19,259	20,200
65+	6,980	6,856	6,843	6,798	6,859	6,989
<b><u>BOTH SEXES</u></b>						
%						
0-19	31.5	30.8	30.9	30.3	30.7	30.3
20-44	42.0	42.4	41.6	41.6	39.5	38.9
45-64	18.3	18.9	19.6	20.5	22.0	22.9
65+	8.2	7.9	7.8	7.6	7.8	7.9

*Source: National Bureau of Statistics*

**Notes:**

- (1) 2002 Census figure has been adjusted by 2.4% to take into account undercounts**
- (2) From 2006-2009 the population is based on the 2002 Census**
- (3) The population has been adjusted and rebased using the 2010 Census**
- (4) From 2011 onwards the population is based on the 2010 Census**

## Age-Dependency Ratio, 1990-2012

Table 5

Years	Age-Dependency Ratio <sup>(1)</sup>
1990	689
1991	655
1992	642
1993	623
1994	607
1995	594
1996	578
1997	561
1998	538
1999	516
2000	504
2001	504
2002	499
2003	499
2004	494
2005	485
2006	462
2007	463
2008	441
2009	439
2010	421
2011	434
2012	433

*Source: National Bureau of Statistics*

**Notes:**

(1) Age-Dependency ratio is the ratio of persons in the dependent ages ( under 15 and 65+) to those in the economically productive age group (15-64) measured per thousand population



**REGISTERED LIVE BIRTHS BY YEAR, MONTH OF REGISTRATION,  
SEX AND STATUS, 2007-2012**

**Table 6**

Year	2007	2008	2009	2010	2011	2012 <sup>(1)</sup>
<b>Month</b>						
January	87	116	120	114	103	129
February	93	120	127	99	103	118
March	122	106	142	114	130	140
April	153	126	146	145	144	150
May	180	138	148	127	160	185
June	132	113	151	141	135	116
July	145	186	140	142	152	
August	145	130	103	135	130	
September	119	141	140	121	135	
October	128	116	120	119	151	
November	104	126	117	126	146	
December	91	128	126	121	136	
<b><u>TOTAL</u></b>	<b><u>1,499</u></b>	<b><u>1,546</u></b>	<b><u>1,580</u></b>	<b><u>1,504</u></b>	<b><u>1,625</u></b>	<b><u>838</u></b>
<b><u>SEX</u></b>						
Males	754	729	825	761	807	432
Females	745	817	755	743	818	406
<b><u>STATUS</u></b>						
<u>Nuptial</u>	312	323	321	330	355	172
<u>Ex-Nuptial</u>						
Acknowledged	928	941	947	901	992	517
Other	259	282	312	273	278	149

*Source: National Bureau of Statistics/Civil Status Office*

**(1) Relates to the first six months**

**Chart 2:  
Population Pyramid, Mid 2012  
Population Estimates**

**Age Group**

