

National Bureau of Statistics

STATISTICAL

BULLETIN

Tourism 2011 No.05

JUNE 2011

VISITOR STATISTICS MAY 2011

VISITOR STATISTICS MAY 2011

SUMMARY

1. Visitor arrivals and average length of stay, 2005 – 2011
2. Visitor arrivals by purpose of visit, 2008-2011
- 3(a) Visitor arrivals by country of residence and month, 2011
- 3(b) Visitor arrivals by country of residence and month, 2011 (detailed)
4. Visitor departures: distribution of length of stay, 2002-2011
5. Visitor arrivals by mode of transport, 2010-2011
- 6(a)-(d) Visitors stay by location, 2010-2011
- 7(a)-(d) Visitors stay by accommodation, 2010-2011

Charts

Chart-Visitor arrivals January-May, 2009-2011

Chart-Visitor arrivals by leading markets (May) 2010 v/s 2011

Chart- Visitors stay by location, January-May, 2011

National Bureau of Statistics

CARAVELLE HOUSE - MANGLIER STREET, P.O. BOX 206 - VICTORIA - MAHE - SEYCHELLES, Tel: +248 611650 - Fax: +248 225634/225339
E-mail: ceo@nbs.gov.sc, stats@nbs.gov.sc - Website: www.nbs.gov.sc

"Your stepping-stone for informed decisions"

SUMMARY

1. (14,059) visitors arrived in Seychelles during the month of May 2011, reflecting a decrease of 1% compared to May 2010. This also included visitors in transit. The figure was 27% above the average for the same month of the last five years. In May 2011, visitors stayed for an average of 9.6 nights compared to 10.2 nights in May 2010 (Table 1).
2. (91%) of visitors arriving in May 2011 were on holiday, whilst 4% were on business or combining business with a holiday (Table 2). (75%) of visitors were from Europe, 12% from Africa, 11% from Asia and 2% from America (Table 3).
3. (78,815) visitors arrived during the period January to May 2011, which was 8% above the 2010 level. The average length of stay of these visitors was 10.0 nights compared to 10.4 nights in 2010, indicating a 4% increase in the number of visitor nights spent in Seychelles.
4. (91%) of visitors who arrived during the five months of 2011 were on holiday, whilst 4% were on business or combining business with a holiday.
5. Compared to the same period in 2010, the number of visitors from Europe increased by 8%. Increases were recorded in visitor arrivals from France (19%), UK & Eire and Belgium & Luxembourg both with (18%), Switzerland (5%), Austria (11%), the Netherlands (30%), Scandinavia (19%) and Spain & Portugal (2%). Decreases below the 2010 level were recorded in visitors from Italy (5%) and Russia (6%). Visitors coming from Germany remained unchanged.
6. During the five months of 2011, the number of visitors from Africa increased by 2% compared to the same period in 2010. Visitors coming from Asia increased by 11%, Oceania 4% and America by 14%.
7. The six leading markets for 2011 are:

Country	No of visitors
France	19,441
Italy	9,741
Germany	8,353
UK & Eire	5,261
Russia	4,535
South Africa	3,863

JANUARY TO MAY 2011

Number of visitors and average length of stay

3. (78,815) visitors arrived during the period January to May 2011, which was 8% above the 2010 level. The average length of stay of these visitors was 10.0 nights compared to 10.4 nights in 2010, indicating a 4% increase in the number of visitor nights spent in Seychelles.

Purpose of visit (Table 2)

4. (91%) of visitors who arrived during the five months of 2011 were on holiday, whilst 4% were on business or combining business with a holiday.

Country of residence (Table 3)

5. Compared to the same period in 2010, the number of visitors from Europe increased by 8%. Increases were recorded in visitor arrivals from France (19%), UK & Eire and Belgium & Luxembourg both with (18%), Switzerland (5%), Austria (11%), the Netherlands (30%), Scandinavia (19%) and Spain & Portugal (2%). Decreases below the 2010 level were recorded in visitors from Italy (5%) and Russia (6%). Visitors coming from Germany remained unchanged.

Mode of transport (Table 5)

8. During May 2011, all of the non-transit visitors arrived by air transport. Comparing May 2011 with May 2010, non-transit visitors stayed at the 2010 level and transit visitors decreased by 60%.

Visitors stay 2011 (Tables 6 & 7)

9. Tables 6(a) and 7(a) give a breakdown of visitors stay by both location and accommodation respectively. 55% of visitors stayed on Mahe while 24% stayed on Praslin and 6% on La Digue. (88%) of visitors stayed in hotels while 5% stayed with friends.

VISITOR ARRIVALS AND AVERAGE LENGTH OF STAY, 2005 - 2011

Table 1

	Jan	Feb	Mar	Apr	May	Jun	Jul	Aug	Sep	Oct	Nov	Dec	Year
	(Numbers)												
2005	10,144	10,213	12,667	10,615	7,658	7,895	10,502	12,444	9,381	12,446	12,240	12,449	128,654
2006	11,920	12,528	11,237	12,702	8,321	8,964	11,588	13,666	11,089	13,867	11,134	13,611	140,627
2007	11,170	14,543	15,557	14,709	9,967	10,332	13,704	14,149	12,491	16,729	13,290	14,632	161,273
2008	12,799	14,863	16,481	15,063	11,200	9,546	13,128	14,139	11,410	14,189	12,815	13,319	158,952
2009	11,256	12,552	14,056	14,444	11,746	10,725	12,689	14,192	12,236	15,115	14,279	14,251	157,541
2010	12,771	14,894	17,442	13,830	14,176	11,753	14,373	14,529	12,514	17,536	15,323	15,388	174,529
2011	13,800	14,868	16,906	19,182	14,059								78,815
	(Percentage change)												
06/05	18	23	-11	20	9	14	10	10	18	11	-9	9	9
07/06	-6	16	38	16	20	15	18	4	13	21	19	8	15
08/07	15	2	6	2	12	-8	-4	0	-9	-15	-4	-9	-1
09/08	-12	-16	-15	-4	5	12	-3	0	7	7	11	7	-1
10/09	13	19	24	-4	21	10	13	2	2	16	7	8	11
11/10	8	0	-3	39	-1								
AVERAGE LENGTH OF STAY (1)	(Nights)												
2005	9.3	9.5	9.2	9.9	9.8	9.5	10.2	10.6	10.5	9.8	8.8	9.2	9.7
2006	9.6	9.1	9.6	9.6	9.7	9.8	10.4	10.8	10.4	9.3	9.9	9.6	9.8
2007	10.2	8.9	9.7	9.9	10.0	10.1	10.4	11.1	10.5	9.0	9.7	9.6	9.9
2008	9.5	9.2	10.3	10.0	10.2	10.3	10.6	11.3	10.7	9.9	10.0	9.8	10.1
2009	10.5	9.5	10.1	10.0	9.9	9.8	10.5	11.6	10.4	9.8	10.0	9.9	10.2
2010	11.4	10.0	9.9	10.5	10.2	10.1	10.6	11.8	10.3	9.8	9.7	9.8	10.4
2011	10.9	10.0	10.0	9.6	9.6								10.0

Source: National Bureau of Statistics from disembarkation cards

Note: (1) Length of stay is calculated from immigration records from departing visitors.

VISITOR ARRIVALS BY PURPOSE OF VISIT, 2008 - 2011

Table 2

Number of visitors

	Jan	Feb	Mar	Apr	May	Jun	Jul	Aug	Sep	Oct	Nov	Dec	Year
2008- Total	12,799	14,863	16,481	15,063	11,200	9,546	13,128	14,139	11,410	14,189	12,815	13,319	158,952
Holiday	10,274	12,631	14,958	13,817	10,219	8,558	11,415	13,194	10,287	13,040	11,229	12,390	142,012
Business	744	757	1,003	922	769	692	715	576	731	829	912	584	9,234
Holiday/Business	34	52	56	71	41	59	35	21	44	42	59	53	567
Transit	1,543	1,159	279	37	52	26	23	86	22	25	246	110	3,608
Other/not stated	204	264	185	216	119	211	940	262	326	253	369	182	3,531
2009- Total	11,256	12,552	14,056	14,444	11,746	10,725	12,689	14,192	12,236	15,115	14,279	14,251	157,541
Holiday	9,695	11,290	12,904	13,557	10,774	9,709	11,604	13,272	11,082	13,472	12,033	12,611	142,003
Business	678	546	872	649	708	693	821	664	751	1,215	1,120	869	9,586
Holiday/Business	54	47	74	44	47	66	32	32	44	61	47	40	588
Transit	640	560	90	70	91	53	35	34	26	21	162	119	1,901
Other/not stated	189	109	116	124	126	204	197	190	333	346	917	612	3,463
2010- Total	12,771	14,894	17,442	13,830	14,176	11,753	14,373	14,529	12,514	17,536	15,323	15,388	174,529
Holiday	10,604	12,774	16,057	12,606	12,765	10,549	12,996	13,436	11,492	15,858	13,508	14,017	156,662
Business	845	955	967	820	802	532	810	593	743	1,102	1,122	563	9,854
Holiday/Business	36	35	51	43	29	29	30	33	38	54	66	36	480
Transit	67	78	65	22	84	101	52	130	34	101	225	207	1,166
Other/not stated	1,219	1,052	302	339	496	542	485	337	207	421	402	565	6,367
2011- Total	13,800	14,868	16,906	19,182	14,059	-	-	-	-	-	-	-	78,815
Holiday	12,400	13,549	15,199	17,702	12,785								71,635
Business	538	660	744	494	531								2,967
Holiday/Business	51	45	44	30	28								198
Transit	124	43	31	35	34								267
Other/not stated*	687	571	888	921	681								3,748

Source: National Bureau of Statistics from disembarkation cards

Note: * including crew

VISITOR ARRIVALS BY COUNTRY OF RESIDENCE AND MONTH - 2011

Table 3(a)

Country of residence	Jan	Feb	Mar	Apr	May	Jun	Jul	Aug	Sep	Oct	Nov	Dec	Total
<u>TOTAL</u>	<u>13,800</u>	<u>14,868</u>	<u>16,906</u>	<u>19,182</u>	<u>14,059</u>								<u>78,815</u>
<u>EUROPE</u>	<u>10,172</u>	<u>11,841</u>	<u>12,972</u>	<u>14,577</u>	<u>10,568</u>								<u>60,130</u>
France	2,945	4,421	4,689	4,511	2,875								19,441
UK & Eire	740	831	859	1,536	1,295								5,261
Germany	1,210	1,555	1,781	2,154	1,653								8,353
Italy	1,450	1,642	2,367	2,345	1,937								9,741
Switzerland	389	587	475	894	460								2,805
Austria	247	367	252	345	273								1,484
Belgium & Luxembourg	151	155	264	378	202								1,150
Netherlands	59	114	108	182	109								572
Scandinavia	327	427	287	318	108								1,467
Spain & Portugal	116	137	187	332	245								1,017
Russia	1,536	644	774	739	842								4,535
Other CIS	306	132	260	153	182								1,033
Other Europe	696	829	669	690	387								3,271
<u>AFRICA</u>	<u>1,954</u>	<u>1,407</u>	<u>1,811</u>	<u>2,155</u>	<u>1,677</u>								<u>9,004</u>
Reunion	691	157	460	297	430								2,035
Mauritius	278	246	259	304	227								1,314
East Africa(1)	65	150	126	155	96								592
South Africa	688	619	698	1,158	700								3,863
Other S Africa(2)	27	82	105	60	91								365
Other Africa	205	153	163	181	133								835
<u>ASIA</u>	<u>1,136</u>	<u>1,248</u>	<u>1,709</u>	<u>2,007</u>	<u>1,483</u>								<u>7,583</u>
United Arab Emirates	429	332	815	694	572								2,842
Other Middle East	94	318	294	680	270								1,656
Indian Sub Continent	279	222	262	226	342								1,331
China	150	204	166	229	102								851
Other Far East	184	172	172	178	197								903
<u>OCEANIA</u>	<u>113</u>	<u>43</u>	<u>57</u>	<u>99</u>	<u>80</u>								<u>392</u>
<u>AMERICA</u>	<u>425</u>	<u>329</u>	<u>357</u>	<u>344</u>	<u>251</u>								<u>1,706</u>
USA	239	239	238	232	193								1,141
Other America	186	90	119	112	58								565

Source: National Bureau of Statistics from disembarkation cards

Notes: (1) East Africa includes: Kenya, Tanzania, Uganda. (2) Botswana, Lesotho, Malawi, Namibia, Swaziland, Zambia and Zimbabwe.

Table 3(b) (continued)

Country of Residence	Jan	Feb	Mar	Apr	May	Jun	Jul	Aug	Sep	Oct	Nov	Dec	Total
ASIA	<u>1,136</u>	<u>1,248</u>	<u>1,709</u>	<u>2,007</u>	<u>1,483</u>								<u>7,583</u>
United Arab Emirates	429	332	815	694	572								2,842
Bahrain	5	12	9	45	32								103
Iran	14	7	50	5	15								91
Iraq	0	0	0	0	1								1
Jordan	0	4	0	4	3								11
Kuwait	14	15	1	15	6								51
Lebanon	4	20	4	44	3								75
Oman	6	4	9	5	12								36
Qatar	32	59	173	119	149								532
Saudi Arabia	14	174	32	193	37								450
Syria	2	4	2	0	4								12
Israel	3	17	13	250	8								291
Yemen	0	2	0	0	-								2
Other (Middle East)	0	0	1	0	-								1
Bangladesh	3	2	10	0	3								18
India	207	169	208	180	313								1,077
Pakistan	23	18	16	8	9								74
Sri Lanka	34	14	17	25	8								98
Maldives	6	10	10	11	7								44
Other (Indian Sub-Continent)	6	9	1	2	2								20
China	150	204	166	229	102								851
Hong Kong	11	4	5	12	8								40
Indonesia	11	8	30	14	10								73
Japan	46	30	31	32	27								166
South Korea	30	37	26	25	55								173
Malaysia	11	16	12	10	30								79
Singapore	41	50	46	26	40								203
Taiwan	1	7	0	4	-								12
Thailand	6	1	12	26	16								61
Philippines	25	15	10	27	7								84
Other (Far East)	2	4	0	2	4								12
OCEANIA	<u>113</u>	<u>43</u>	<u>57</u>	<u>99</u>	<u>80</u>								<u>392</u>
Australia	102	26	54	89	74								345
New Zealand	6	12	2	10	-								30
Other	5	5	1	0	6								17
AMERICA	<u>425</u>	<u>329</u>	<u>357</u>	<u>344</u>	<u>251</u>								<u>1,706</u>
Canada	98	42	55	65	19								279
USA	239	239	238	232	193								1,141
Mexico	6	3	2	14	2								27
W. Indies	6	6	5	2	14								33
Argentina	39	13	16	7	11								86
Brazil	26	14	38	10	7								95
Other	11	12	3	14	5								45

Source: National Bureau of Statistics from disembarkation cards

VISITOR DEPARTURES: DISTRIBUTION OF LENGTH OF STAY, 2002-2011

Table 4

	Length of stay (% nights)									Total	Average length of stay (nights)
	0	1 - 2	3 - 6	7 - 8	9 - 13	14 - 15	16 - 20	21 - 28	29+		
2002	2	4	21	22	31	9	5	3	2	100	10.1
2003	2	4	21	22	33	10	5	3	1	100	10.1
2004	2	4	21	22	33	9	5	2	2	100	10.0
2005	3	5	20	23	30	11	4	3	1	100	9.7
2006	2	4	19	24	30	12	4	3	1	100	9.8
2007	1	4	20	25	31	12	4	2	1	100	9.9
2008	1	4	20	23	32	11	4	3	2	100	10.1
2009	1	3	21	23	31	11	5	3	2	100	10.2
2010	1	3	20	25	30	12	4	3	2	100	10.4
2011											
<u>2010</u>											
Jan	0	2	19	24	32	10	5	4	3	100	11.4
Feb	1	4	26	25	27	10	4	2	2	100	10.0
Mar	0	3	25	24	31	10	3	2	2	100	9.9
Apr	1	2	22	23	32	10	5	3	2	100	10.5
May	0	4	19	28	31	11	3	2	2	100	10.2
Jun	1	4	18	27	31	13	3	2	2	100	10.1
Jul	0	3	18	23	32	15	4	3	2	100	10.6
Aug	0	3	13	21	31	17	8	5	3	100	11.8
Sep	0	4	18	24	30	15	4	2	2	100	10.3
Oct	1	2	20	26	31	15	3	2	1	100	9.8
Nov	1	4	20	28	28	11	4	2	1	100	9.7
Dec	1	5	23	27	26	10	4	3	2	100	9.8
<u>2011</u>											
Jan	0	3	14	26	32	12	6	4	3	100	10.9
Feb	1	4	20	27	28	12	3	3	2	100	10.0
Mar	0	4	19	28	32	10	3	2	2	100	10.0
Apr	1	3	19	28	33	11	3	2	1	100	9.6
May	1	3	18	29	33	10	4	2	1	100	9.6
Jun											
Jul											
Aug											
Sep											
Oct											
Nov											
Dec											

Source: National Bureau of Statistics from disembarkation cards

VISITOR ARRIVALS BY MODE OF TRANSPORT, 2010 - 2011

Table 5

Number of visitors

<u>Year/Month</u>	TRANSIT			NON - TRANSIT			TOTAL VISITORS		
	Air	Sea	Total	Air	Sea	Total	Air	Sea	Total
<u>2010</u>									
January	50	17	67	12,669	35	12,704	12,719	52	12,771
February	55	23	78	14,815	1	14,816	14,870	24	14,894
March	47	18	65	17,325	52	17,377	17,372	70	17,442
April	21	1	22	13,693	115	13,808	13,714	116	13,830
May	84	0	84	14,078	14	14,092	14,162	14	14,176
June	81	20	101	11,637	15	11,652	11,718	35	11,753
July	52	0	52	14,300	21	14,321	14,352	21	14,373
August	35	95	130	14,392	7	14,399	14,427	102	14,529
September	28	6	34	12,419	61	12,480	12,447	67	12,514
October	101	0	101	17,347	88	17,435	17,448	88	17,536
November	103	122	225	14,967	131	15,098	15,070	253	15,323
December	187	20	207	14,967	214	15,181	15,154	234	15,388
Total	844	322	1,166	172,609	754	173,363	173,453	1,076	174,529
<u>2011</u>									
January	89	35	124	13,412	264	13,676	13,501	299	13,800
February	17	27	44	14,791	33	14,824	14,808	60	14,868
March	28	3	31	16,846	29	16,875	16,874	32	16,906
April	24	11	35	19,137	10	19,147	19,161	21	19,182
May	26	8	34	14,017	8	14,025	14,043	16	14,059
June			-			-	-	-	-
July			-			-	-	-	-
August			-			-	-	-	-
September			-			-	-	-	-
October			-			-	-	-	-
November			-			-	-	-	-
December			-			-	-	-	-
Total	184	84	268	78,203	344	78,547	78,387	428	78,815

Source: National Bureau of Statistics from disembarkation cards.

VISITORS STAY BY LOCATION - 2010

(Numbers)

Table 6(a)

	Jan-10	Feb-10	Mar-10	Apr-10	May-10	Jun-10	Jul-10	Aug-10	Sep-10	Oct-10	Nov-10	Dec-10	Total
Mahe	7,287	7,877	8,785	7,092	7,598	6,482	7,986	7,494	6,688	8,942	8,269	8,544	93,044
Praslin	2,587	3,475	4,176	3,175	3,244	2,748	3,472	3,795	3,171	4,273	3,216	3,097	40,429
La Digue	665	876	1,107	809	756	642	805	989	780	1,058	814	918	10,219
Other Islands	1,702	1,900	2,318	1,829	1,747	1,506	1,558	1,607	1,336	2,100	1,861	1,869	21,333
On Vessel (1)	530	766	1,056	925	831	375	552	644	539	1,163	1,163	960	9,504
Total	12,771	14,894	17,442	13,830	14,176	11,753	14,373	14,529	12,514	17,536	15,323	15,388	174,529

VISITORS STAY BY LOCATION - 2011

(Numbers)

Table 6(b)

	Jan-11	Feb-11	Mar-11	Apr-11	May-11	Jun-11	Jul-11	Aug-11	Sep-11	Oct-11	Nov-11	Dec-11	Total
Mahe	7,731	8,003	9,328	10,028	7,757								42,847
Praslin	2,646	3,217	3,888	4,631	3,354								17,736
La Digue	770	903	912	1,197	824								4,606
Other Islands	1,554	1,958	1,934	2,413	1,588								9,447
On Vessel (1)	1,099	787	844	913	536								4,179
Total	13,800	14,868	16,906	19,182	14,059	-	-	-	-	-	-	-	78,815

VISITORS STAY BY LOCATION - 2010

(Percentage)

Table 6(c)

	Jan-10	Feb-10	Mar-10	Apr-10	May-10	Jun-10	Jul-10	Aug-10	Sep-10	Oct-10	Nov-10	Dec-10	Total
Mahe	57	53	50	51	54	55	56	52	53	51	54	56	53
Praslin	20	23	24	23	23	23	24	26	25	24	21	20	23
La Digue	5	6	6	6	5	5	6	7	6	6	5	6	6
Other Islands	13	13	13	13	12	13	11	11	11	12	12	12	12
On Vessel (1)	4	5	6	7	6	3	4	4	4	7	8	6	5
Total	100	100	100	100	100	100	100	100	100	100	100	100	100

VISITORS STAY BY LOCATION - 2011

(Percentage)

Table 6 (d)

	Jan-11	Feb-11	Mar-11	Apr-11	May-11	Jun-11	Jul-11	Aug-11	Sep-11	Oct-11	Nov-11	Dec-11	Total
Mahe	56	54	55	52	55								54
Praslin	19	22	23	24	24								23
La Digue	6	6	5	6	6								6
Other Islands	11	13	11	13	11								12
On Vessel (1)	8	5	5	5	4								5
Total	100	100	100	100	100								100

Source: National Bureau of Statistics from disembarkation cards

(1) Includes yachts, cruise ship and sea bound vessels

VISITORS STAY BY ACCOMMODATION - 2010

(Numbers)

Table 7 (a)

	Jan-10	Feb-10	Mar-10	Apr-10	May-10	Jun-10	Jul-10	Aug-10	Sep-10	Oct-10	Nov-10	Dec-10	Total
Hotels(1)	9,997	12,247	15,132	11,642	12,286	10,294	12,100	12,634	11,139	15,074	12,922	12,623	148,090
Friends	967	918	1,001	997	803	724	1,290	1,038	679	1,094	950	1,499	11,960
Yachts	503	719	1,024	873	813	345	547	618	538	1,067	740	663	8,450
Cruise Ships	21	28	17	44	-	-	-	-	-	-	415	287	812
Vessel	6	19	15	8	18	30	5	26	1	96	8	10	242
Others	1,277	963	253	266	256	360	431	213	157	205	288	306	4,975
Total	12,771	14,894	17,442	13,830	14,176	11,753	14,373	14,529	12,514	17,536	15,323	15,388	174,529

VISITORS STAY BY ACCOMMODATION - 2011

(Numbers)

Table 7 (b)

	Jan-11	Feb-11	Mar-11	Apr-11	May-11	Jun-11	Jul-11	Aug-11	Sep-11	Oct-11	Nov-11	Dec-11	Total
Hotels(1)	11,357	12,933	14,892	16,870	12,430								68,482
Friends	933	997	851	1,144	729								4,654
Yachts	694	714	788	890	524								3,610
Cruise Ships	376	50	34	8	5								473
Vessel	29	23	22	15	7								96
Others	411	151	319	255	364								1,500
Total	13,800	14,868	16,906	19,182	14,059	-	-	-	-	-	-	-	78,815

VISITORS STAY BY ACCOMMODATION - 2010

(Percentage)

Table 7 (c)

	Jan-10	Feb-10	Mar-10	Apr-10	May-10	Jun-10	Jul-10	Aug-10	Sep-10	Oct-10	Nov-10	Dec-10	Total
Hotels(1)	78	82	87	84	87	88	84	87	89	86	84	82	85
Friends	8	6	6	7	6	6	9	7	5	6	6	10	7
Yachts	4	5	6	6	6	3	4	4	4	6	5	4	5
Cruise Ships	0	0	0	0	0	0	0	0	0	0	3	2	0
Vessel	0	0	0	0	0	0	0	0	0	1	0	0	0
Others	10	6	1	2	2	3	3	1	1	1	2	2	3
Total	100	100	100	100	100	100	100	100	100	100	100	100	100

VISITORS STAY BY ACCOMMODATION - 2011

(Percentage)

Table 7 (d)

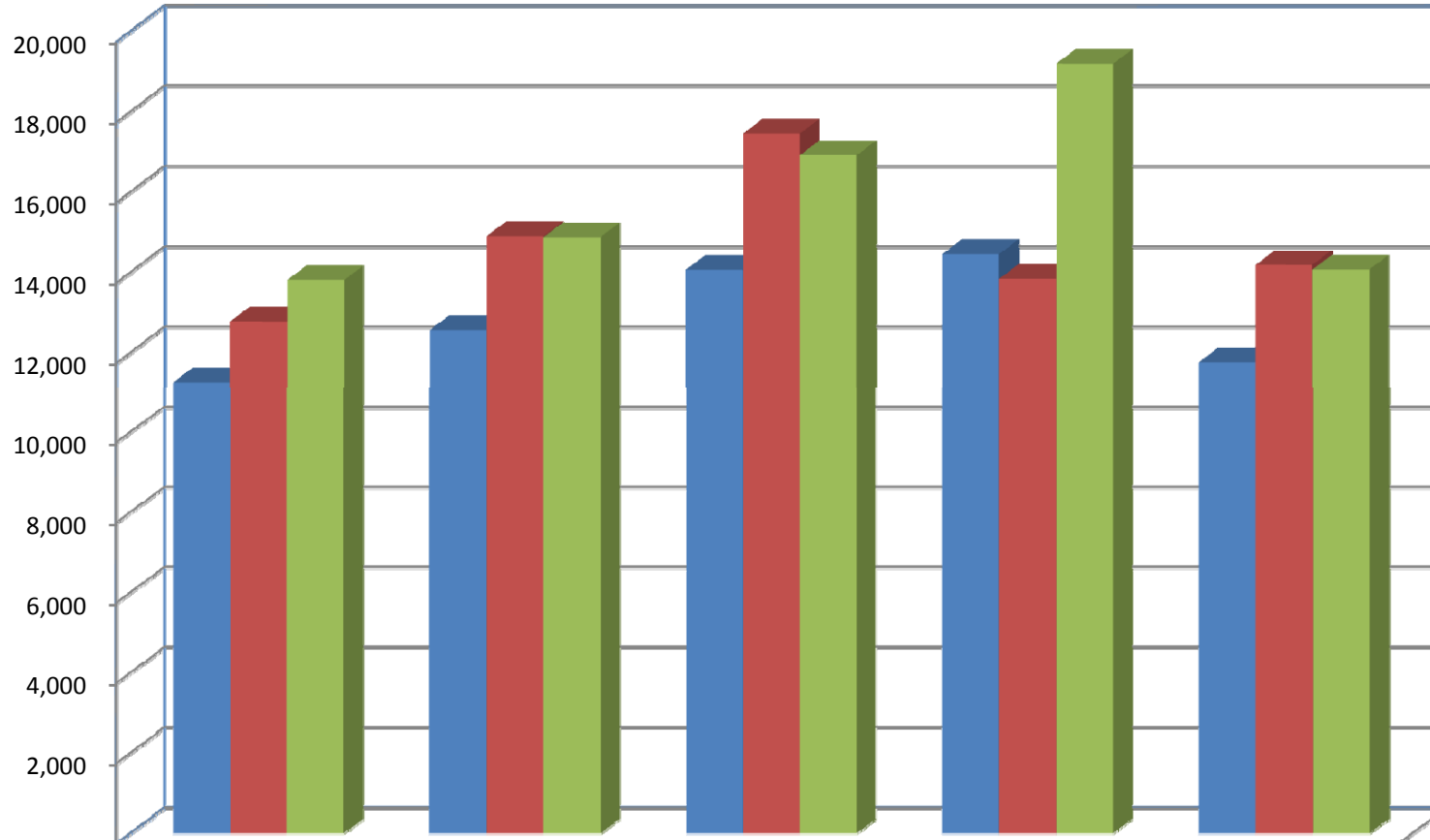
	Jan-11	Feb-11	Mar-11	Apr-11	May-11	Jun-11	Jul-11	Aug-11	Sep-11	Oct-11	Nov-11	Dec-11	Total
Hotels(1)	82	87	88	88	88								87
Friends	7	7	5	6	5								6
Yachts	5	5	5	5	4								5
Cruise Ships	3	0	0	0	0								1
Vessel	0	0	0	0	0								0
Others	3	1	2	1	3								2
Total	100	100	100	100	100	0	0	0	0	0	0	0	100

Source: National Bureau of Statistics from disembarkation cards

(1) Includes guest houses & self-catering establishments

Visitor Arrivals January - May, 2009 - 2011

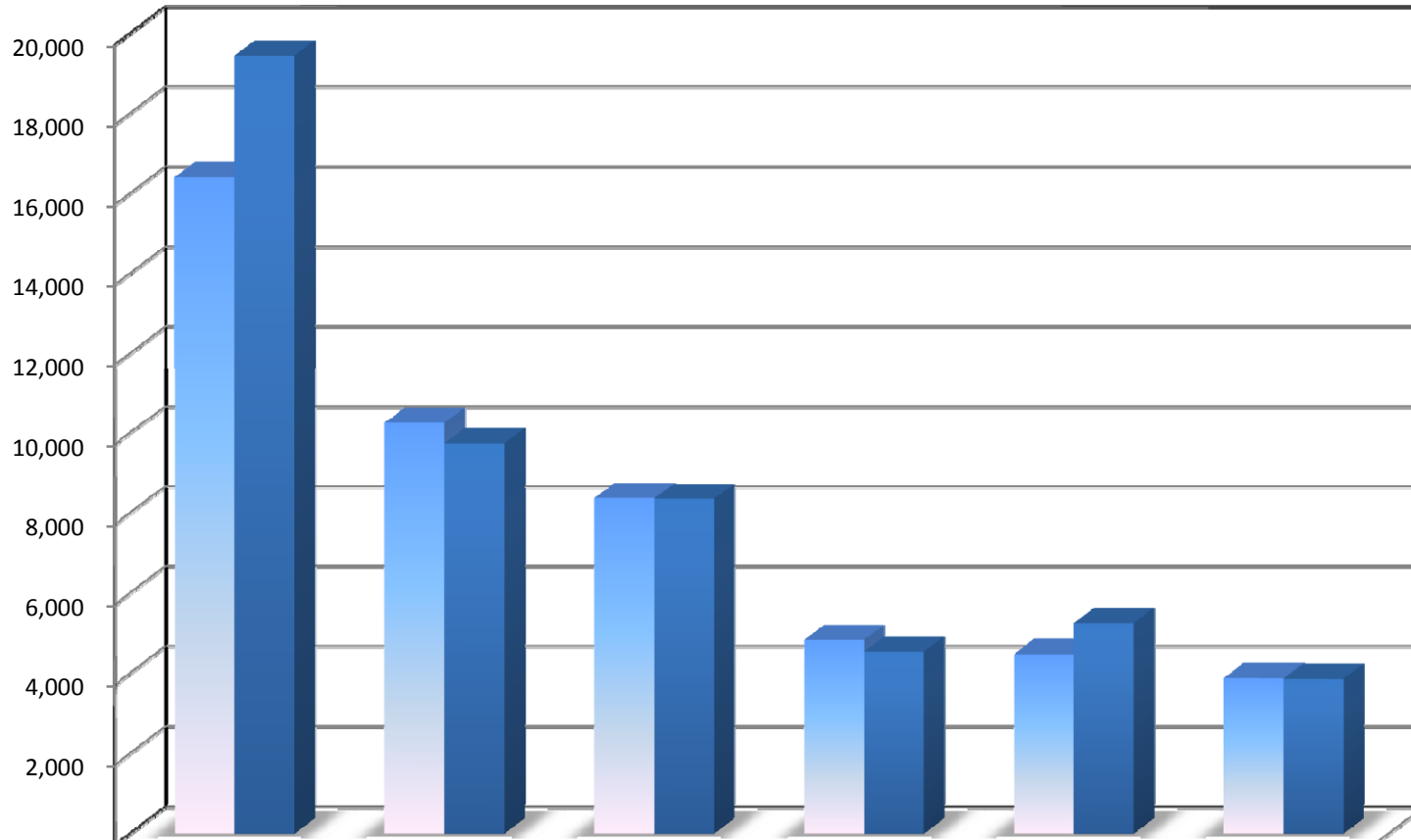
Numbers



	Jan	Feb	Mar	Apr	May
■ 2009	11,256	12,552	14,056	14,444	11,746
■ 2010	12,771	14,894	17,442	13,830	14,176
■ 2011	13,800	14,868	16,906	19,182	14,059

Visitor Arrivals by Leading Markets (January - May) 2010 v/s 2011

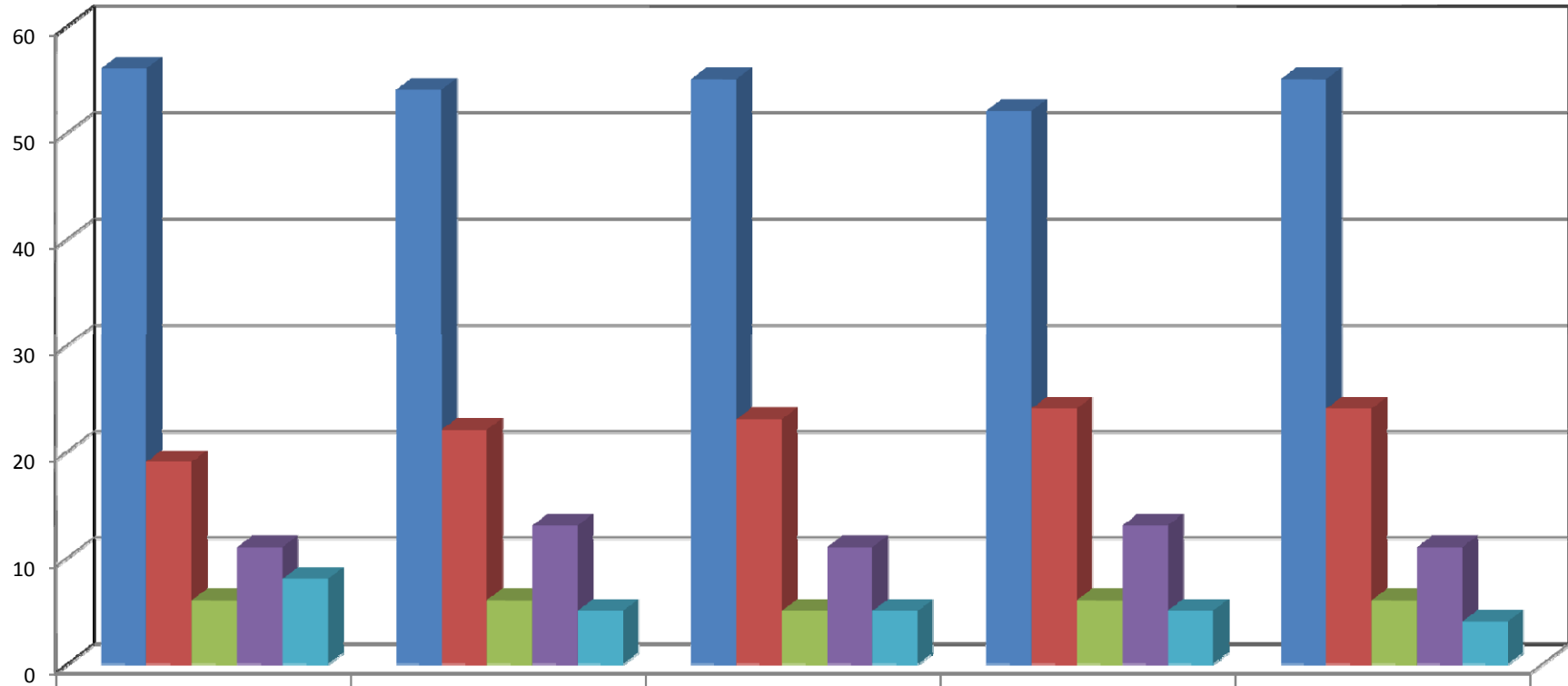
Numbers



	France	Italy	Germany	Russia	UK & Eire	South Africa
2010	16,404	10,260	8,374	4,829	4,473	3,884
2011	19,441	9,741	8,353	4,535	5,261	3,863

Visitors stay by Location, January - May 2011

Percentage (%)



	Jan	Feb	Mar	Apr	May
■ Mahe	56	54	55	52	55
■ Praslin	19	22	23	24	24
■ La Digue	6	6	5	6	6
■ Other Islands	11	13	11	13	11
■ Vessel	8	5	5	5	4