



# STATISTICAL BULLETIN

Hotel Statistics 2010

No.3

MARCH 2010

## HOTEL STATISTICS JANUARY- DECEMBER 2009

### SUMMARY

#### HOTEL STATISTICS, JANUARY - DECEMBER 2009

1. Bed and room occupancy rates by type of accommodation and location, 2009
2. Beds available and bed-nights occupied by type of accommodation and location, 2008 – 2009
3. Bed and room occupancy rates by type of accommodation and location, 2008 – 2009
4. Bed-nights occupied and bed occupancy rates by size of establishment: Mahe and other islands, 2008 – 2009
5. Beds, bed-nights occupied and bed occupancy rates, 2008 – 2009
6. Analysis by occupancy and by visitors, 1996 – 2008
7. Bed-nights occupied by type of accommodation and location, 2005 – 2009
8. Beds available by type of accommodation and location, 2005 – 2009

Chart: Average Number of Beds Available 2005 -2009.

Chart: Bed nights Occupied, 2005 -2009

---

NATIONAL STATISTICS BUREAU

CARAVELLE HOUSE - MANGLIER STREET, P.O. BOX 206 - VICTORIA - MAHE - SEYCHELLES, Tel: +248 611650 - Fax: +248 225634/225339  
E-mail: ceo@nsb.gov.sc, stats@nsb.gov.sc - Website: www.nsb.gov.sc

"Your stepping-stone for informed decisions"

## SUMMARY

### Hotel Statistics (Tables1 - 8)

#### December 2009

1. In December 2009, licensed accommodation establishments sold **87620** bed nights and **43870** room nights. The figure was **15%** more for beds and **12%** for rooms compared to the same month of 2008. The percentage occupancy rate in December 2009 was **55%** for beds and **56%** for rooms compared to **50%** for beds and **53%** for rooms in December 2008.
2. The highest bed occupancy rate in December 2009 was for Hotels and Self Catering on Mahe (**60%**). Hotels on Other Islands recorded (**56%**), Praslin (**52%**) and La Digue (**47%**) occupancy. The highest bed occupancy for Guest and Private Houses was on La Digue (**56%**) and the lowest was on Other Islands (**43%**).
3. On average, there were **260** more beds available in December 2009 than in the same month of 2008.
4. Of the **87620** bed nights sold in December 2009, visitors occupied **86020**. This indicates that (**61%**) of visitor nights (*calculated as the number of visitor arrivals times average length of stay*) in December 2009 were spent in licensed accommodation establishments.

#### January - December

5. A total of **1009190** bed nights and **511920** room nights were sold during this period of 2009 compared to **1007120** bed nights and **520740** room nights during the same period in 2008. For the twelve months of 2009, visitors occupied **994450** of bed nights sold. This indicates that **62%** of visitor nights were spent in licensed accommodation establishments.
6. The percentage occupancy rates to date have been **54%** for beds and **56%** for rooms, compared to **57%** for beds and **60%** for rooms for the same period of 2008.

**BED AND ROOM OCCUPANCY RATES BY TYPE OF ACCOMMODATION AND LOCATION, 2009**

**Table 1**

	Jan	Feb	Mar	Apr	May	Jun	Jul	Aug	Sep	Oct	Nov	Dec	Year
<b><u>BED OCCUPANCY (%)</u></b>	46	51	52	56	51	51	54	59	58	58	61	55	54
<b>Hotels and Self catering</b>	48	51	53	58	53	52	58	61	60	61	62	56	56
Mahe	51	52	51	55	49	49	53	57	57	62	66	60	56
Praslin	48	54	56	62	56	56	63	65	65	62	58	52	58
La Digue	33	38	47	48	42	45	51	63	49	51	51	47	47
Other Islands	42	51	52	62	63	59	64	64	62	60	66	56	58
<b>Guest and Private houses</b>	42	48	49	48	47	45	44	50	50	48	54	50	48
Mahe	41	45	47	45	46	46	44	51	51	47	54	50	47
Praslin	42	51	53	49	48	45	46	47	49	52	62	54	50
La Digue	38	47	49	48	47	44	47	48	48	44	49	56	58
Other Islands	48	50	48	52	51	47	40	57	54	48	47	43	49
<b><u>ROOM OCCUPANCY (%)</u></b>	49	53	54	57	53	53	55	58	59	62	64	56	56
<b>Hotels and Self catering</b>	51	54	55	59	54	54	58	60	62	66	66	58	58
Mahe	57	58	56	60	53	54	56	57	60	67	74	64	60
Praslin	47	54	57	60	55	56	62	65	66	70	57	51	58
La Digue	32	37	46	47	43	44	45	57	48	50	50	48	46
Other Islands	41	48	51	60	62	56	64	61	63	61	64	54	57
<b>Guest and Private houses</b>	44	49	50	49	49	46	44	49	50	47	53	50	48
Mahe	43	47	49	47	47	47	44	49	49	46	53	49	47
Praslin	43	52	52	50	51	46	42	45	50	52	60	52	50
La Digue	39	48	51	49	49	45	47	49	47	45	48	55	48
Other Islands	54	50	50	53	53	48	42	55	55	44	46	45	49

Source: National Statistics Bureau (Hotel returns).

**BEDS AVAILABLE AND BED-NIGHTS OCCUPIED BY TYPE OF ACCOMMODATION AND LOCATION, 2008 - 2009**

**Table 2**

		Jan	Feb	Mar	Apr	May	Jun	Jul	Aug	Sep	Oct	Nov	Dec	Year
<b><u>AVE. NO OF BEDS AVAILABLE</u></b>	2008	5120	4920	4980	4890	4480	4230	4710	4980	4910	4980	4950	4880	4840
	<b>2009</b>	<b>4980</b>	<b>4900</b>	<b>4990</b>	<b>5060</b>	<b>5010</b>	<b>4930</b>	<b>5050</b>	<b>5130</b>	<b>5130</b>	<b>5140</b>	<b>5480</b>	<b>5140</b>	<b>5080</b>
Hotels and self catering	2008	3970	3790	3840	3770	3360	3160	3580	3840	3750	3790	3820	3790	3710
	<b>2009</b>	<b>3820</b>	<b>3790</b>	<b>3850</b>	<b>3900</b>	<b>3890</b>	<b>3860</b>	<b>3890</b>	<b>4040</b>	<b>4030</b>	<b>4050</b>	<b>4400</b>	<b>4000</b>	<b>3960</b>
Mahe	2008	2050	1810	1830	1820	1590	1530	1820	1840	1830	1840	1830	1840	1800
	<b>2009</b>	<b>1870</b>	<b>1840</b>	<b>1850</b>	<b>1860</b>	<b>1860</b>	<b>1860</b>	<b>1890</b>	<b>2020</b>	<b>2020</b>	<b>2040</b>	<b>2360</b>	<b>2000</b>	<b>1960</b>
Other Islands	2008	1920	1980	2010	1940	1770	1640	1760	2000	1920	1950	1990	1950	1900
	<b>2009</b>	<b>1950</b>	<b>1940</b>	<b>2000</b>	<b>2030</b>	<b>2030</b>	<b>2000</b>	<b>2000</b>	<b>2020</b>	<b>2010</b>	<b>2010</b>	<b>2030</b>	<b>2000</b>	<b>2000</b>
Guest and Private houses	2008	1150	1120	1140	1120	1120	1060	1130	1150	1170	1190	1130	1080	1130
	<b>2009</b>	<b>1160</b>	<b>1120</b>	<b>1140</b>	<b>1170</b>	<b>1120</b>	<b>1070</b>	<b>1160</b>	<b>1090</b>	<b>1100</b>	<b>1090</b>	<b>1090</b>	<b>1140</b>	<b>1120</b>
Mahe	2008	450	440	430	440	430	390	480	460	460	460	460	460	450
	<b>2009</b>	<b>470</b>	<b>460</b>	<b>460</b>	<b>480</b>	<b>480</b>	<b>430</b>	<b>480</b>	<b>450</b>	<b>460</b>	<b>460</b>	<b>460</b>	<b>460</b>	<b>460</b>
Other Islands	2008	700	690	700	690	690	670	650	690	710	730	670	620	680
	<b>2009</b>	<b>690</b>	<b>660</b>	<b>680</b>	<b>680</b>	<b>640</b>	<b>640</b>	<b>680</b>	<b>640</b>	<b>640</b>	<b>640</b>	<b>630</b>	<b>680</b>	<b>620</b>
<b><u>BED-NIGHTS OCCUPIED</u></b> (000)	2008	86.9	81.4	96.4	90.6	78.0	64.3	81.4	100.2	78.6	92.9	80.3	76.2	1007
	<b>2009</b>	<b>71.7</b>	<b>69.5</b>	<b>80.5</b>	<b>84.5</b>	<b>79.8</b>	<b>75.2</b>	<b>85.3</b>	<b>93.2</b>	<b>89.0</b>	<b>92.9</b>	<b>100.0</b>	<b>87.6</b>	<b>1009</b>
Hotels and self catering	2008	72.6	66.1	79.6	74.9	63.3	53.0	65.6	82.5	64.1	75.2	64.8	58.6	820
	<b>2009</b>	<b>56.6</b>	<b>54.6</b>	<b>63.1</b>	<b>67.7</b>	<b>63.4</b>	<b>60.6</b>	<b>69.4</b>	<b>76.1</b>	<b>72.4</b>	<b>76.7</b>	<b>82.4</b>	<b>69.8</b>	<b>813</b>
Mahe	2008	39.5	34.7	39.5	35.9	31.2	27.1	32.1	37.3	30.3	36.7	30.7	29.0	404
	<b>2009</b>	<b>29.4</b>	<b>26.7</b>	<b>29.4</b>	<b>30.7</b>	<b>28.2</b>	<b>27.3</b>	<b>31.0</b>	<b>35.9</b>	<b>34.8</b>	<b>39.4</b>	<b>46.5</b>	<b>37.3</b>	<b>397</b>
Other Islands	2008	33.0	31.4	40.1	39.0	32.1	25.9	33.5	45.2	33.8	38.5	34.2	29.5	416
	<b>2009</b>	<b>27.2</b>	<b>27.9</b>	<b>33.7</b>	<b>37.0</b>	<b>35.2</b>	<b>33.3</b>	<b>38.4</b>	<b>40.2</b>	<b>37.6</b>	<b>37.3</b>	<b>35.9</b>	<b>32.5</b>	<b>416</b>
Guest and Private houses	2008	14.3	15.3	16.8	15.7	14.7	11.3	15.8	17.7	14.5	17.6	15.5	17.6	187
	<b>2009</b>	<b>15.1</b>	<b>14.9</b>	<b>17.3</b>	<b>16.8</b>	<b>16.4</b>	<b>14.6</b>	<b>15.9</b>	<b>17.1</b>	<b>16.5</b>	<b>16.2</b>	<b>17.6</b>	<b>17.8</b>	<b>196</b>
Mahe	2008	5.3	5.0	4.9	4.7	4.7	3.5	6.5	5.8	5.0	6.1	6.1	7.6	65
	<b>2009</b>	<b>5.9</b>	<b>5.8</b>	<b>6.7</b>	<b>6.6</b>	<b>6.8</b>	<b>6.0</b>	<b>6.5</b>	<b>7.1</b>	<b>6.9</b>	<b>6.6</b>	<b>7.4</b>	<b>7.1</b>	<b>80</b>
Other Islands	2008	9.0	10.3	11.9	11.0	10.1	7.8	9.3	11.9	9.5	11.5	9.3	10.0	122
	<b>2009</b>	<b>9.1</b>	<b>9.1</b>	<b>10.6</b>	<b>10.2</b>	<b>9.7</b>	<b>8.6</b>	<b>9.4</b>	<b>10.0</b>	<b>9.6</b>	<b>9.6</b>	<b>10.2</b>	<b>10.7</b>	<b>117</b>

Source: National Statistics Bureau (Hotel returns).

**BED AND ROOM OCCUPANCY RATES BY TYPE OF ACCOMMODATION AND LOCATION, 2008-2009**

**Table 3**

		Jan	Feb	Mar	Apr	May	Jun	Jul	Aug	Sep	Oct	Nov	Dec	Year
<b><u>BED OCCUPANCY (%)</u></b>	2008	55	57	62	62	56	51	56	65	53	60	54	50	57
	<b>2009</b>	<b>46</b>	<b>51</b>	<b>52</b>	<b>56</b>	<b>51</b>	<b>51</b>	<b>54</b>	<b>59</b>	<b>58</b>	<b>58</b>	<b>61</b>	<b>55</b>	<b>54</b>
<u>Hotels and self catering</u>	2008	59	60	67	66	61	56	59	69	57	64	57	50	60
	<b>2009</b>	<b>48</b>	<b>51</b>	<b>53</b>	<b>58</b>	<b>53</b>	<b>52</b>	<b>58</b>	<b>61</b>	<b>60</b>	<b>61</b>	<b>62</b>	<b>56</b>	<b>56</b>
Mahe	2008	62	66	69	66	63	59	57	65	55	64	56	51	61
	<b>2009</b>	<b>51</b>	<b>52</b>	<b>51</b>	<b>55</b>	<b>49</b>	<b>49</b>	<b>53</b>	<b>57</b>	<b>57</b>	<b>62</b>	<b>66</b>	<b>60</b>	<b>56</b>
Other Islands	2008	55	55	65	67	59	53	61	73	59	64	57	49	60
	<b>2009</b>	<b>45</b>	<b>51</b>	<b>54</b>	<b>61</b>	<b>56</b>	<b>55</b>	<b>62</b>	<b>64</b>	<b>62</b>	<b>60</b>	<b>59</b>	<b>52</b>	<b>57</b>
<u>Guest and Private houses</u>	2008	40	47	48	47	42	35	45	50	41	48	46	53	45
	<b>2009</b>	<b>42</b>	<b>48</b>	<b>49</b>	<b>48</b>	<b>47</b>	<b>45</b>	<b>44</b>	<b>50</b>	<b>50</b>	<b>48</b>	<b>54</b>	<b>50</b>	<b>48</b>
Mahe	2008	38	40	37	36	35	30	43	41	36	42	45	53	40
	<b>2009</b>	<b>41</b>	<b>45</b>	<b>47</b>	<b>45</b>	<b>46</b>	<b>46</b>	<b>44</b>	<b>51</b>	<b>51</b>	<b>47</b>	<b>54</b>	<b>50</b>	<b>47</b>
Other Islands	2008	42	52	54	54	47	39	46	56	44	51	46	52	49
	<b>2009</b>	<b>43</b>	<b>49</b>	<b>50</b>	<b>50</b>	<b>49</b>	<b>45</b>	<b>45</b>	<b>50</b>	<b>50</b>	<b>48</b>	<b>54</b>	<b>51</b>	<b>49</b>
<b><u>ROOM OCCUPANCY(%)</u></b>	2008	57	62	65	65	60	54	58	68	58	64	58	53	60
	<b>2009</b>	<b>49</b>	<b>53</b>	<b>54</b>	<b>57</b>	<b>53</b>	<b>53</b>	<b>55</b>	<b>58</b>	<b>59</b>	<b>62</b>	<b>64</b>	<b>56</b>	<b>56</b>
<u>Hotels and self catering</u>	2008	61	66	71	70	65	59	61	73	63	69	61	53	64
	<b>2009</b>	<b>51</b>	<b>54</b>	<b>55</b>	<b>59</b>	<b>54</b>	<b>54</b>	<b>58</b>	<b>60</b>	<b>62</b>	<b>66</b>	<b>66</b>	<b>58</b>	<b>58</b>
Mahe	2008	69	76	77	74	71	65	62	71	62	73	64	55	68
	<b>2009</b>	<b>57</b>	<b>58</b>	<b>56</b>	<b>60</b>	<b>53</b>	<b>54</b>	<b>56</b>	<b>57</b>	<b>60</b>	<b>67</b>	<b>74</b>	<b>64</b>	<b>60</b>
Other Islands	2008	52	56	66	67	59	54	60	76	63	65	59	50	61
	<b>2009</b>	<b>44</b>	<b>50</b>	<b>54</b>	<b>59</b>	<b>55</b>	<b>55</b>	<b>60</b>	<b>63</b>	<b>63</b>	<b>65</b>	<b>57</b>	<b>52</b>	<b>56</b>
<u>Guest and Private houses</u>	2008	42	50	46	47	43	38	47	51	43	50	48	54	47
	<b>2009</b>	<b>44</b>	<b>49</b>	<b>50</b>	<b>49</b>	<b>49</b>	<b>46</b>	<b>44</b>	<b>49</b>	<b>50</b>	<b>47</b>	<b>53</b>	<b>50</b>	<b>48</b>
Mahe	2008	40	45	34	38	38	37	47	44	40	47	47	56	43
	<b>2009</b>	<b>43</b>	<b>47</b>	<b>49</b>	<b>47</b>	<b>47</b>	<b>47</b>	<b>44</b>	<b>49</b>	<b>49</b>	<b>46</b>	<b>53</b>	<b>49</b>	<b>47</b>
Other Islands	2008	44	52	54	52	46	38	47	56	45	52	48	53	49
	<b>2009</b>	<b>45</b>	<b>50</b>	<b>51</b>	<b>51</b>	<b>51</b>	<b>46</b>	<b>43</b>	<b>49</b>	<b>51</b>	<b>48</b>	<b>52</b>	<b>51</b>	<b>49</b>

Source: National Statistics Bureau (Hotel returns).

MAHE AND OTHER ISLANDS, 2008 - 2009

Table 4

<u>AVERAGE N</u> <u>AVAILABLE</u>	<u>HOTELS ON MAHE</u>				<u>HOTELS</u> <u>OTHER ISLANDS</u>	
	<u>LARGE HOTELS (1)</u>		<u>OTHER</u>		2008	2009
	2008	2009	2008	2009	2008	2009
	1470	1570	790	850	2580	2650
<b><u>BED-NIGHTS OCCUPIED</u></b>						
<b>( '000)</b>						
January	34.9	24.7	9.9	10.6	42.1	36.4
February	30.3	22.2	9.5	10.3	41.7	37.0
March	34.5	24.3	9.9	11.4	52.0	43.7
April	31.4	25.4	9.2	11.9	50.0	47.2
May	27.0	23.8	8.8	11.1	42.2	44.9
June	23.5	23.3	7.1	10.0	33.7	41.9
July	27.7	26.3	10.9	11.1	42.8	47.8
August	31.9	30.2	11.2	12.9	57.2	50.1
September	26.3	29.8	9.0	11.9	43.3	47.3
October	32.5	34.1	10.3	11.9	50.1	47.3
November	26.5	40.7	10.3	13.1	43.5	46.1
December	24.7	31.7	12.0	12.7	39.5	43.2
<b>YEAR</b>	351	337	118	139	538	533
<b><u>BED-OCCUPANCY RATES (%)</u></b>						
January	66	53	41	42	52	44
February	71	54	42	44	54	51
March	75	53	41	46	62	53
April	71	57	39	46	63	58
May	70	52	37	42	55	54
June	64	52	34	41	49	53
July	60	57	43	40	57	57
August	68	60	45	48	69	61
September	59	62	38	46	55	59
October	70	67	41	45	60	57
November	59	69	43	51	54	58
December	53	63	48	48	50	52
<b>YEAR</b>	65	59	41.1	45	57	55

Source: National Statistics Bureau

Notes:(1) Hotels on Mahe with 50 or more beds

**BEDS, BED-NIGHTS OCCUPIED AND BED-OCCUPANCY RATES, 2005-2009**

**Table 5**

	<b>2005</b>	<b>2006</b>	<b>2007</b>	<b>2008</b>	<b>2009</b>
<b><u>AVERAGE NO OF BEDS</u></b>					
<b><u>AVAILABLE</u></b>	<b>4920</b>	<b>5150</b>	<b>5450</b>	<b>4840</b>	<b>5080</b>
<b><u>BED-NIGHTS OCCUPIED</u></b>					
<b>(‘000)</b>					
January	69.8	76.8	87.4	86.9	71.7
February	58.5	73.3	87.8	81.4	69.5
March	77.2	76.7	102.4	96.3	80.0
April	61.4	75.5	97.4	90.6	84.0
May	56.5	62.9	80.4	78.0	79.8
June	52.6	64.8	75.6	64.3	75.2
July	65.9	82.7	97.9	81.4	85.3
August	89.8	102.1	110.9	100.2	93.2
September	70.1	82.2	90.1	78.6	89.0
October	79.5	93.2	107.5	92.9	92.9
November	76.9	84.8	95.7	80.3	100.0
December	63.6	75.2	82.7	76.2	87.6
<b>YEAR</b>	<b>822</b>	<b>950</b>	<b>1116</b>	<b>1007</b>	<b>1009</b>
<b><u>BED-OCCUPANCY RATES</u></b>					
January	47	48	51	55	46
February	44	51	57	57	51
March	52	48	60	62	52
April	43	49	59	62	56
May	39	40	48	56	51
June	37	44	48	51	51
July	44	53	58	56	54
August	56	63	65	65	59
September	45	52	55	53	58
October	49	58	63	60	58
November	50	55	59	54	61
December	41	47	48	50	55
<b>YEAR</b>	<b>44</b>	<b>51</b>	<b>56</b>	<b>57</b>	<b>54</b>

**Source: National Statistics Bureau (Hotel returns)**

**HOTEL STATISTICS: ANALYSIS BY OCCUPANCY AND BY VISITORS**

**Table 6**

Period		Rooms Available	Room Nights Capacity	Beds Available	Bed Nights Capacity	Room Nights Sold	Room Nights Occupied (%)	Bed Nights Occupied (%)	Visitor Nights		
									Visitors	Residents	TOTAL
									1996	2,200	806,350
1997	2,280	830,800	4,600	1,678,430	503,390	61%	56%	937,750	6,810	<b>944,560</b>	
1998	2,350	856,440	4,730	1,727,430	488,750	57%	53%	910,040	9,170	<b>919,210</b>	
1999	2,380	866,950	4,780	1,743,690	480,530	55%	53%	904,380	10,530	<b>914,910</b>	
2000	2,470	904,630	5,000	1,828,610	493,020	54%	52%	933,140	12,310	<b>945,450</b>	
2001	2,440	892,080	4,940	1,803,060	483,880	54%	51%	913,410	12,190	<b>925,600</b>	
2002	2,360	860,850	4,780	1,746,400	465,500	54%	51%	883,090	13,760	<b>896,850</b>	
2003	2,440	888,880	4,930	1,798,080	432,060	49%	46%	824,550	8,440	<b>832,990</b>	
2004	2,480	906,510	5,030	1,840,320	417,110	46%	44%	797,910	10,080	<b>807,990</b>	
2005	2,420	883,000	4,920	1,796,290	424,550	48%	46%	809,330	12,290	<b>821,620</b>	
2006	2,530	923,070	5,140	1,874,390	494,140	54%	51%	931,900	18,300	<b>950,200</b>	
2007	2,710	990,300	5,460	1,993,810	578,770	58%	56%	1,095,480	20,460	<b>1,115,940</b>	
2008	2,360	863,970	4,840	1,769,920	520,740	60%	57%	990,430	16,690	<b>1,007,120</b>	
<b>2009</b>	<b>2,500</b>	<b>912,380</b>	<b>5,080</b>	<b>1,854,800</b>	<b>511,920</b>	<b>56%</b>	<b>58%</b>	<b>994,450</b>	<b>14,740</b>	<b>1,009,190</b>	
<b>Quarterly</b>											
<b>2007</b>	Q1	2,740	246,600	5,530	497,750	144,800	59%	56%	274,060	3,520	<b>277,580</b>
	Q2	2,690	244,300	5,390	490,360	131,630	54%	52%	246,990	6,490	<b>253,480</b>
	Q3	2,710	249,160	5,460	502,400	151,490	61%	60%	293,360	5,690	<b>299,050</b>
	Q4	2,720	250,230	5,470	503,310	150,900	60%	57%	281,080	4,750	<b>285,830</b>
<b>2008</b>	Q1	2,430	220,930	5,010	455,580	135,540	61%	58%	260,290	4,380	<b>264,670</b>
	Q2	2,220	201,970	4,530	412,430	120,640	60%	57%	228,320	4,570	<b>232,890</b>
	Q3	2,380	218,940	4,870	447,790	134,540	61%	58%	255,940	4,250	<b>260,190</b>
	Q4	2,410	222,130	4,940	454,120	130,020	59%	55%	245,880	3,490	<b>249,370</b>
<b>2009</b>	<b>Q1</b>	<b>2,450</b>	<b>220,020</b>	<b>4,960</b>	<b>446,470</b>	<b>113,960</b>	<b>52%</b>	<b>50%</b>	<b>217,990</b>	<b>3,680</b>	<b>221,670</b>
	Q2	2,460	224,000	5,003	455,260	121,520	54%	53%	235,890	3,630	<b>239,520</b>
	Q3	2,510	231,010	5,110	469,660	132,360	57%	57%	263,720	3,750	<b>267,470</b>
	<b>Q4</b>	<b>2,580</b>	<b>237,350</b>	<b>5,250</b>	<b>483,410</b>	<b>144,080</b>	<b>61%</b>	<b>58%</b>	<b>276,840</b>	<b>3,680</b>	<b>280,520</b>
<b>Year on year percentage change</b>											
1997		3.6%	3.0%	2.7%	2.4%	-0.6%	-3.5%	-1.8%	0.6%	10.2%	<b>0.6%</b>
1998		3.1%	3.1%	2.8%	2.9%	-2.9%	-5.8%	-5.4%	-3.0%	34.7%	<b>-2.7%</b>
1999		1.3%	1.2%	1.1%	0.9%	-1.7%	-2.9%	0.0%	-0.6%	14.8%	<b>-0.5%</b>
2000		3.8%	4.3%	4.6%	4.9%	2.6%	-1.7%	-1.9%	3.2%	16.9%	<b>3.3%</b>
2001		-1.2%	-1.4%	-1.2%	-1.4%	-1.9%	-0.5%	-1.9%	-2.1%	-1.0%	<b>-2.1%</b>
2002		-3.3%	-3.5%	-3.2%	-3.1%	-3.8%	-0.3%	0.0%	-3.3%	12.9%	<b>-3.1%</b>
2003		3.4%	3.3%	3.1%	3.0%	-7.2%	-10.1%	-9.8%	-6.6%	-38.7%	<b>-7.1%</b>
2004		1.6%	2.0%	2.0%	2.3%	-3.5%	-5.3%	-4.3%	-3.2%	19.4%	<b>-3.0%</b>
2005		-2.4%	-2.6%	-2.2%	-2.4%	1.8%	4.5%	4.5%	1.4%	21.9%	<b>1.7%</b>
2006		4.5%	4.5%	4.5%	4.3%	16.4%	11.3%	10.9%	15.1%	48.9%	<b>15.6%</b>
2007		7.1%	7.3%	6.2%	6.4%	17.1%	9.2%	9.8%	17.6%	11.8%	<b>17.4%</b>
2008		-12.9%	-12.8%	-11.4%	-11.2%	-10.0%	3.1%	1.8%	-9.6%	-18.4%	<b>-9.8%</b>
<b>2009</b>		<b>5.9%</b>	<b>5.6%</b>	<b>5.0%</b>	<b>4.8%</b>	<b>-1.7%</b>	<b>-6.9%</b>	<b>1.8%</b>	<b>0.4%</b>	<b>-11.7%</b>	<b>0.2%</b>
<b>Quarter on quarter percentage change</b>											
2008	Q1	-11.3%	-10.4%	-9.4%	-8.5%	-6.4%	4.5%	3.6%	-5.0%	24.4%	<b>-4.7%</b>
	Q2	-17.5%	-17.3%	-16.0%	-15.9%	-8.3%	10.9%	9.6%	-7.6%	-29.6%	<b>-8.1%</b>
	Q3	-12.2%	-12.1%	-10.8%	-10.9%	-11.2%	1.1%	-3.3%	-12.8%	-25.3%	<b>-13.0%</b>
	Q4	-11.4%	-11.2%	-9.7%	-9.8%	-13.8%	-2.9%	-3.5%	-12.5%	-26.5%	<b>-12.8%</b>
<b>2009</b>	<b>Q1</b>	<b>0.8%</b>	<b>-0.4%</b>	<b>-1.0%</b>	<b>-2.0%</b>	<b>-15.9%</b>	<b>-15.6%</b>	<b>-13.8%</b>	<b>-16.3%</b>	<b>-16.0%</b>	<b>-16.2%</b>
	Q2	10.8%	10.9%	10.4%	10.4%	0.7%	-9.2%	-7.0%	3.3%	-20.6%	<b>2.8%</b>
	Q3	5.5%	5.5%	4.9%	4.9%	-1.6%	-6.8%	-1.7%	3.0%	-11.8%	<b>2.8%</b>
	<b>Q4</b>	<b>7.1%</b>	<b>6.9%</b>	<b>6.3%</b>	<b>6.4%</b>	<b>10.8%</b>	<b>3.7%</b>	<b>5.5%</b>	<b>12.6%</b>	<b>5.4%</b>	<b>12.5%</b>

Source: National Statistics Bureau



**BED-NIGHTS OCCUPIED BY TYPE OF ACCOMMODATION AND LOCATION, 2005 - 2009**

**Table 7**

	<b>YEAR</b>	<b>Jan</b>	<b>Feb</b>	<b>Mar</b>	<b>Apr</b>	<b>May</b>	<b>Jun</b>	<b>Jul</b>	<b>Aug</b>	<b>Sep</b>	<b>Oct</b>	<b>Nov</b>	<b>Dec</b>	<b>Year</b>
<b>BED-NIGHTS OCCUPIED</b>														
<b>(000)</b>														
	2005	69.8	58.5	77.2	61.4	56.5	52.6	65.9	89.8	70.1	79.5	76.9	63.6	822
	2006	76.7	73.3	76.7	74.5	62.9	64.8	82.7	102.1	82.1	93.2	84.8	75.2	950
	2007	87.4	87.8	102.4	97.4	80.4	75.6	97.9	110.9	90.1	107.5	95.7	82.7	1116
	2008	86.9	81.4	96.4	90.6	78.0	64.3	81.4	100.2	78.6	92.9	80.3	76.2	1007
	<b>2009</b>	<b>71.7</b>	<b>69.5</b>	<b>80.5</b>	<b>84.5</b>	<b>79.8</b>	<b>75.2</b>	<b>85.3</b>	<b>93.2</b>	<b>89.0</b>	<b>92.9</b>	<b>100.0</b>	<b>87.6</b>	<b>1009</b>
<b>Hotels and self catering</b>														
	2005	55.9	44.2	59.8	46.7	43.6	43.4	51.9	72.1	57.0	63.8	60.9	51.0	650
	2006	62.2	59.1	60.5	61.0	51.9	55.5	68.0	82.6	68.6	77.5	69.3	61.8	778
	2007	72.7	71.9	83.4	80.5	67.0	64.9	81.2	90.7	74.3	90.0	78.1	68.2	923
	2008	72.6	66.1	79.6	74.9	63.3	53.0	65.6	82.5	64.1	75.2	64.8	58.6	820
	<b>2009</b>	<b>56.6</b>	<b>54.6</b>	<b>63.1</b>	<b>67.7</b>	<b>63.4</b>	<b>60.6</b>	<b>69.4</b>	<b>76.1</b>	<b>72.4</b>	<b>76.7</b>	<b>82.4</b>	<b>69.8</b>	<b>813</b>
Mahe														
	2005	34.1	23.5	33.4	25.2	25.2	20.8	26.1	37.2	29.6	34.3	36.5	30.9	354
	2006	36.5	33.1	32.5	34.7	27.3	29.8	36.8	44.7	38.0	44.6	40.5	38.1	437
	2007	43.3	38.8	45.5	43.5	33.4	32.4	39.9	44.5	38.0	49.2	42.3	40.5	491
	2008	39.5	34.7	39.5	35.9	31.2	27.1	32.1	37.3	30.3	36.7	30.7	29.0	404
	<b>2009</b>	<b>29.4</b>	<b>26.7</b>	<b>29.4</b>	<b>30.7</b>	<b>28.2</b>	<b>27.3</b>	<b>31.0</b>	<b>35.9</b>	<b>34.8</b>	<b>39.4</b>	<b>46.5</b>	<b>37.3</b>	<b>397</b>
Other Islands														
	2005	21.8	20.7	26.4	21.5	21.5	22.6	25.8	35.0	27.4	29.5	24.4	20.1	296
	2006	25.8	26.0	27.9	26.3	24.6	25.7	31.2	47.5	30.7	32.9	28.7	23.7	341
	2007	29.5	33.1	37.9	36.9	36.9	32.5	41.4	46.2	36.3	40.5	35.9	27.7	430
	2008	33.0	31.4	40.1	39.0	32.1	25.9	33.5	45.2	33.8	38.5	34.2	29.5	416
	<b>2009</b>	<b>27.2</b>	<b>27.9</b>	<b>33.7</b>	<b>37.0</b>	<b>35.2</b>	<b>33.3</b>	<b>38.4</b>	<b>40.2</b>	<b>37.6</b>	<b>37.3</b>	<b>35.9</b>	<b>32.5</b>	<b>416</b>
<b>Guest and Private houses</b>														
	2005	13.9	14.3	17.3	14.7	14.7	9.3	14.0	17.7	13.1	15.8	16.0	12.6	171
	2006	14.5	14.2	16.2	14.4	10.4	9.3	14.7	19.5	13.5	15.7	15.6	13.4	171
	2007	14.7	15.8	19.0	17.0	13.5	10.7	16.7	20.2	15.9	16.2	17.5	14.4	193
	2008	14.3	15.3	16.8	15.7	14.7	11.3	15.8	17.7	14.5	17.6	15.5	17.6	187
	<b>2009</b>	<b>15.1</b>	<b>14.9</b>	<b>17.3</b>	<b>16.8</b>	<b>16.4</b>	<b>14.6</b>	<b>15.9</b>	<b>17.1</b>	<b>16.5</b>	<b>16.2</b>	<b>17.6</b>	<b>17.8</b>	<b>196</b>
Mahe														
	2005	5.2	5.5	6.9	5.4	5.4	2.6	4.8	6.3	4.6	5.3	5.3	5.1	61
	2006	5.9	5.6	6.0	4.8	3.4	2.1	4.7	6.2	4.7	4.9	4.9	5.4	59
	2007	5.4	6.2	6.3	5.4	4.3	2.6	4.8	5.8	5.1	5.9	6.1	5.3	63
	2008	5.3	5.0	4.9	4.7	4.7	3.5	6.5	5.8	5.0	6.1	6.1	7.6	65
	<b>2009</b>	<b>5.9</b>	<b>5.8</b>	<b>6.7</b>	<b>6.6</b>	<b>6.8</b>	<b>6.0</b>	<b>6.5</b>	<b>7.1</b>	<b>6.9</b>	<b>6.6</b>	<b>7.4</b>	<b>7.1</b>	<b>80</b>
Other Islands														
	2005	8.7	8.8	10.5	9.3	8.4	6.7	9.2	11.4	8.5	10.5	10.7	7.5	110
	2006	8.6	8.6	10.2	9.6	7.0	7.2	10.0	13.3	8.8	10.8	10.6	8.0	113
	2007	9.2	9.7	12.7	11.5	9.1	8.1	11.9	14.4	10.8	11.9	11.5	9.2	130
	2008	9.0	10.3	11.9	11.0	10.1	7.8	9.3	11.9	9.5	11.5	9.3	10.0	122
	<b>2009</b>	<b>9.1</b>	<b>9.1</b>	<b>10.6</b>	<b>10.2</b>	<b>9.7</b>	<b>8.6</b>	<b>9.4</b>	<b>10.0</b>	<b>9.6</b>	<b>9.6</b>	<b>10.2</b>	<b>10.7</b>	<b>117</b>

SOURCE: National Statistics Bureau (Hotel Returns).

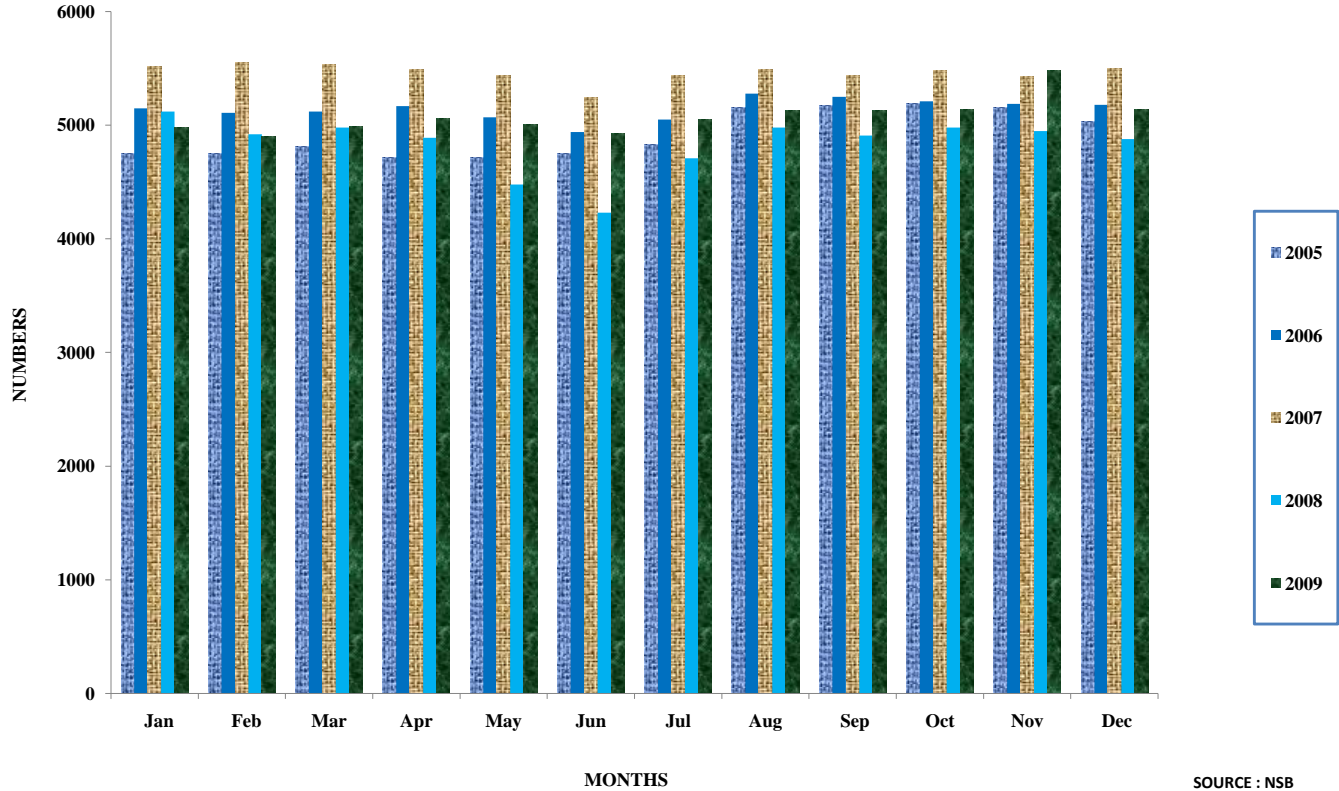
**BEDS AVAILABLE BY TYPE OF ACCOMMODATION AND LOCATION, 2005 - 2009**

**Table 8**

		Jan	Feb	Mar	Apr	May	Jun	Jul	Aug	Sep	Oct	Nov	Dec	Year
<b><u>AVE. NO OF BEDS AVAILABLE</u></b>	<u>2005</u>	<u>4750</u>	<u>4750</u>	<u>4810</u>	<u>4720</u>	<u>4720</u>	<u>4750</u>	<u>4830</u>	<u>5160</u>	<u>5170</u>	<u>5190</u>	<u>5160</u>	<u>5030</u>	<u>4920</u>
	2006	5150	5110	5120	5170	5070	4940	5050	5280	5250	5210	5190	5180	5140
	2007	5520	5550	5530	5490	5440	5240	5440	5490	5440	5480	5430	5500	5460
	2008	5120	4920	4980	4890	4480	4230	4710	4980	4910	4980	4950	4880	4840
	<b>2009</b>	<b>4980</b>	<b>4900</b>	<b>4990</b>	<b>5060</b>	<b>5010</b>	<b>4930</b>	<b>5050</b>	<b>5130</b>	<b>5130</b>	<b>5140</b>	<b>5480</b>	<b>5140</b>	<b>5080</b>
<b><u>Hotels and self catering</u></b>	<u>2005</u>	<u>3500</u>	<u>3490</u>	<u>3560</u>	<u>3510</u>	<u>3490</u>	<u>3640</u>	<u>3680</u>	<u>3940</u>	<u>3940</u>	<u>3990</u>	<u>3850</u>	<u>3850</u>	<u>3720</u>
	2006	3950	3910	3930	3980	3890	3800	3850	4020	4050	4010	4000	4000	3950
	2007	4330	4370	4370	4350	4310	4240	4290	4360	4300	4330	4310	4410	4330
	2008	3970	3790	3840	3770	3360	3160	3580	3840	3750	3790	3820	3790	3710
	<b>2009</b>	<b>3820</b>	<b>3790</b>	<b>3850</b>	<b>3900</b>	<b>3890</b>	<b>3890</b>	<b>4040</b>	<b>4040</b>	<b>4030</b>	<b>4050</b>	<b>4400</b>	<b>4000</b>	<b>3960</b>
Mahe	<u>2005</u>	<u>3500</u>	<u>3490</u>	<u>3560</u>	<u>3510</u>	<u>3490</u>	<u>3640</u>	<u>3680</u>	<u>3940</u>	<u>3940</u>	<u>3990</u>	<u>3850</u>	<u>3850</u>	<u>3720</u>
	2006	3950	3910	3930	3980	3890	3800	3850	4020	4050	4010	4000	4000	3950
	2007	4330	4370	4370	4350	4310	4240	4290	4360	4300	4330	4310	4410	4330
	2008	3970	3790	3840	3770	3360	3160	3580	3840	3750	3790	3820	3790	3710
	<b>2009</b>	<b>1870</b>	<b>1840</b>	<b>1850</b>	<b>1860</b>	<b>1860</b>	<b>1860</b>	<b>1890</b>	<b>2020</b>	<b>2020</b>	<b>2040</b>	<b>2360</b>	<b>2000</b>	<b>1960</b>
Other Islands	<u>2005</u>	<u>1980</u>	<u>1980</u>	<u>1980</u>	<u>1980</u>	<u>1970</u>	<u>1970</u>	<u>1990</u>	<u>1990</u>	<u>2240</u>	<u>2240</u>	<u>2240</u>	<u>2250</u>	<u>2090</u>
	2006	2260	2220	2240	2260	2240	2210	2230	2320	2390	2370	2380	2380	2290
	2007	2400	2430	2400	2420	2410	2360	2390	2440	2410	2450	2430	2450	2410
	2008	2050	1810	1830	1820	1590	1530	1820	1840	1830	1840	1830	1840	1800
	<b>2009</b>	<b>1950</b>	<b>1940</b>	<b>2000</b>	<b>2030</b>	<b>2030</b>	<b>2000</b>	<b>2000</b>	<b>2020</b>	<b>2010</b>	<b>2010</b>	<b>2030</b>	<b>2000</b>	<b>2000</b>
<b><u>Guest and Private houses</u></b>	<u>2005</u>	<u>1530</u>	<u>1510</u>	<u>1580</u>	<u>1540</u>	<u>1530</u>	<u>1670</u>	<u>1690</u>	<u>1700</u>	<u>1710</u>	<u>1750</u>	<u>1700</u>	<u>1610</u>	<u>1630</u>
	2006	1690	1690	1690	1720	1660	1590	1620	1700	1670	1640	1620	1620	1660
	2007	1930	1940	1970	1930	1900	1880	1900	1920	1890	1880	1880	1960	1920
	2008	1920	1980	2010	1940	1770	1640	1760	2000	1920	1950	1990	1950	1900
	<b>2009</b>	<b>1160</b>	<b>1120</b>	<b>1140</b>	<b>1170</b>	<b>1120</b>	<b>1070</b>	<b>1160</b>	<b>1090</b>	<b>1100</b>	<b>1090</b>	<b>1090</b>	<b>1140</b>	<b>1120</b>
Mahe	<u>2005</u>	<u>520</u>	<u>530</u>	<u>530</u>	<u>510</u>	<u>510</u>	<u>420</u>	<u>480</u>	<u>510</u>	<u>520</u>	<u>510</u>	<u>500</u>	<u>500</u>	<u>500</u>
	2006	510	510	500	510	510	440	480	510	500	500	500	490	500
	2007	500	500	450	430	340	330	430	410	430	430	430	440	440
	2008	450	440	430	440	430	390	480	460	460	460	460	460	450
	<b>2009</b>	<b>470</b>	<b>460</b>	<b>460</b>	<b>480</b>	<b>480</b>	<b>430</b>	<b>480</b>	<b>450</b>	<b>460</b>	<b>460</b>	<b>460</b>	<b>460</b>	<b>460</b>
Other Islands	<u>2005</u>	<u>730</u>	<u>690</u>	<u>720</u>	<u>700</u>	<u>710</u>	<u>690</u>	<u>670</u>	<u>710</u>	<u>710</u>	<u>700</u>	<u>710</u>	<u>680</u>	<u>700</u>
	2006	700	690	690	680	670	710	730	760	700	700	690	680	700
	2007	700	680	710	690	710	670	720	730	720	720	700	650	700
	2008	700	690	700	690	690	670	650	690	710	730	670	620	680
	<b>2009</b>	<b>690</b>	<b>660</b>	<b>680</b>	<b>680</b>	<b>640</b>	<b>640</b>	<b>640</b>	<b>640</b>	<b>640</b>	<b>640</b>	<b>630</b>	<b>680</b>	<b>660</b>

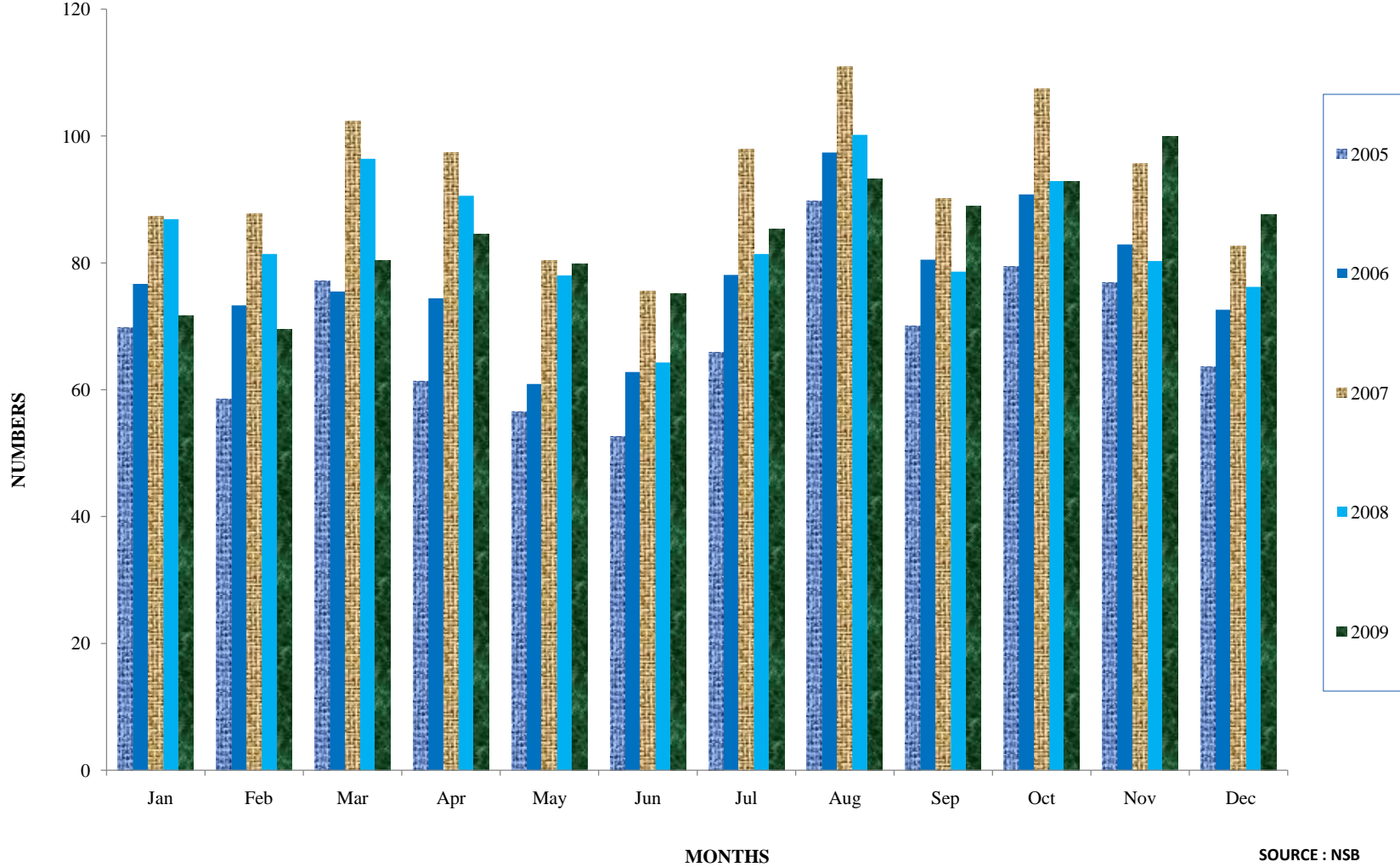
Source: National Statistics Bureau (Hotel Returns)

AVERAGE NUMBER OF BEDS AVAILABLE, 2005 - 2009



SOURCE : NSB

**BEDNIGHTS OCCUPIED, 2005-2009**



SOURCE : NSB